

# How a Big Egg Producer Operates

How does a big egg producer manage his birds? What kind of housing does he use? M. J. B. Mills, director of England's Laughton Egg Co., told how his company handles 75,000 layers at a recent Spillers Egg Production Conference at Edington.

## Air Movement Patterns in Three Laughton Ventilating Systems

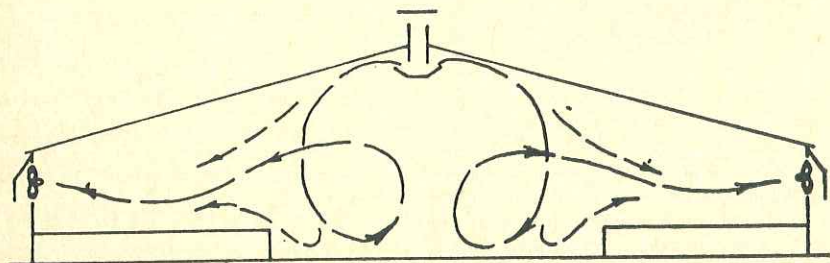


FIG. 1: RIDGE AIR INLET; FANS IN SIDE WALLS.

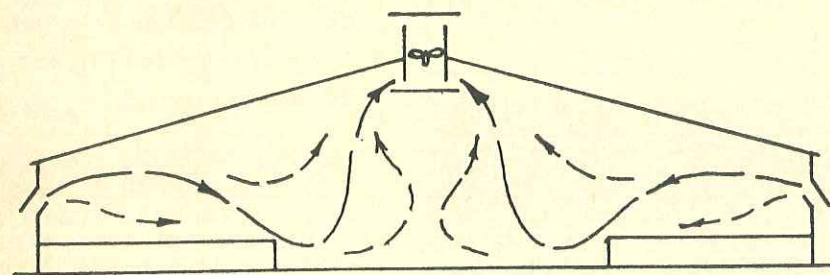


FIG. 2: SIDE AIR INLETS; FANS IN RIDGE.

—→ MAIN AIR FLOW  
- - -→ SECONDARY CURRENTS

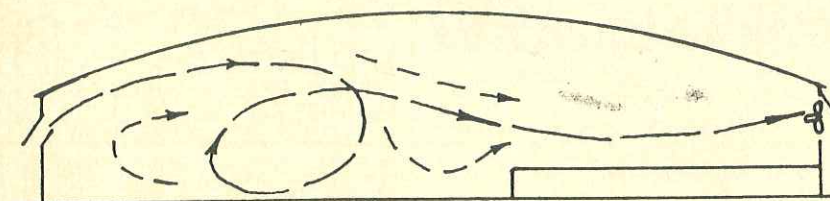


FIG. 3: CROSS-VENTILATION; AIR INLETS & FANS IN SIDE WALLS.

Source: Stockbuildings Ltd.

● England's Laughton Egg Company operates five farms, each with a capacity of 15,000 layers.

Each farm has two pre-fabricated, controlled environment houses, measuring 40 ft. x 380 ft. (12.19 x 115.82 meters) for a total square footage in each house of 15,200 sq. ft. (1533.75 sq. meters). When the area occupied by the egg storage room is subtracted, 7,500 birds can be housed at slightly under two square feet per bird.

The theoretical U value of each house is .124.\* The roofs are lined with two inches of fibre glass and flexible asbestos sheeting. The side walls, constructed of 1-inch (2.5 cm.) tongue-and-groove boarding, are lined with 1-inch (2.5 cm.) fibre glass and flexible asbestos sheeting.

## Four Ventilation Systems

Laughton uses four different ventilation systems. Each system is designed to provide a maximum extraction rate of approximately two cubic feet per minute per pound live weight. With the type of birds used, that equals about 10 cubic feet per minute per bird.

1. Cross ventilation. The fans are installed in boxes along the droppings pit side of the house. The air is drawn in through inlets on the opposite side of the house. The fan boxes are fitted with adjustable shutters to vary air movement.

2. Open ridge. A baffle is below the open ridge. The fans are installed on both sides of the house. With this system, double droppings pits run along either side of the house.

3. Ridge extraction. The air inlets are in the eaves. Double droppings pits run along either side of the house.

4. Pressurized ventilation. The air is drawn in at either end of the house at the apex of the roof. It is then blown in through socks and forced out under pressure at outlets at the sides of the house.

All four systems work satisfactorily. However, the cross-ventilation and ridge-extraction systems are the easiest to control. With the open ridge,

\*The U value is the number of British thermal units that will pass through one square foot of surface in one hour for each degree of temperature difference on the two sides of the construction.



# WORLD'S LEADING SOURCE of Hatching Eggs and Baby Chicks

for BREEDING PURPOSES

WORLD FAMOUS BREEDERS of the United States cooperate with the Agricultural Company of Pan America, Inc., Guilford, Connecticut, U.S.A., in supplying chicks or hatching eggs for breeding purposes directly from the main breeding farms where the real breeding work is being done! Quick shipments to all parts of the world from the best and most reliable sources.

## MOST ADVANCED BREEDING

Through the Agricultural Company of Pan America, Inc., you can buy directly from many of the most famous breeding sources of the United States. You know you are then getting the most advanced breeding in each of the major breeds. **You save from one to two years time in results!** The breeders and the Agricultural Company of Pan America, Inc., **working together as a team**, assure you of the finest quality and best possible service and satisfaction.

## SALES AND DISTRIBUTION CONTRACTS

Sales and distribution contracts are available to established, responsible, and experienced organizations for volume shipments to many countries. These contracts are available on behalf of many important breeders and breeds.

## WORLD-WIDE SERVICE

Thousands of satisfied customers in over 75 countries during the past twenty years or more, have given the Agricultural Company of Pan America, Inc., a **world-wide good name for outstanding quality and service.** Tell us what we can do to help you.

## AGRICULTURAL COMPANY OF PAN AMERICA, INC.

(BOX 2284) GUILFORD, CONNECTICUT, U.S.A.

Cable Address: Agripan

Tel: GL 3-2100 GL 3-2626

Extensive office of the Agricultural Company of Pan America, Inc., Guilford, Connecticut, U.S.A., quickly reached from New York City by air, car, or train, recognized headquarters in the United States for the best sources of hatching eggs and baby chicks for breeding purposes — also other agricultural products and equipment.



For free information, write the number 21 on post card.



**GARRISON VANGUARDS  
MEHR GEWICHT—MEHR FLEISCH!**

Garrison Vanguards sind das Ergebnis 28-jähriger, reiner Cornish Zucht. Sie erhalten besseren Ertrag — mehr Brustfleisch — eine Verfeinerung in allen Entwicklungsabschnitten. Garrison Cornish ist das Qualitätsgeflügel. Vanguards sind wunderbar als Brathühner und Kapaune zu verwenden.

**Garrison X-300 Leghorns**

X-300-Leghorns hatten den höchsten Durchschnitt 2 Jahren bei den Stichproben-Versuchen in Pennsylvania. Die X-300 Leghorns sind eine Kreuzung aus zwei der ältesten Linien Amerikas. Sie haben Energie, erstklassige Eierqualität und so hervorragende Fütterungswirtschaftlichkeit, dass sie bei jeder Leistungsschau, an der sie teilnehmen, sich als "erstklassig" platzieren konnten. Bei dem eben beendeten Stichproben-Versuch in New Jersey legten X-300 Leghorns 265.9 Eier bei 3.94 lbs. (amerik. Pfund) Futter pro Dutzend Eier (Bodenhennen).

**Garrison Golden Sex Links**

Die Hühnchen sind gold-rot, die Hähnchen White Columbian. Diese abgehärteten, wirtschaftlichsten Eierzeuger legen gold-braune Eier—von allen Rassen die grössten Eier—und haben eine Futterumsetzung, die man normalerweise nicht bei so schweren Rassen findet. Anfragen über Garrison-Zuchttiere und Konzessionen geben Sie uns bitte heute herein.

**GARRISON VANGUARDS  
POUR PLUS DE POIDS—  
DE LA VIANDE EN PLUS**

Les Garrison Vanguards représentent le résultat de 28 ans d'élevage Cornwallien pur. Vous obtiendrez un plus grand rendement—de la viande blanche en plus grande quantité—un meilleur fini à tous les stades de développement. Les Cornwalliens Garrison sont les seuls volatiles à viande de qualité. Avec les Vanguards on obtient d'excellentes poulardes à griller, à rôtir, et des chapons.

**Garrison X-300 Leghorns**

Dans les essais d'échantillons pris au hasard en Pennsylvanie, les X-300 Leghorns ont obtenu la plus grande moyenne en deux années. La race X-300 Leghorn, issue du croisement de deux des plus anciennes lignées héréditaires d'Amérique, possède une grande vigueur, donne des oeufs de la plus haute qualité, et a une efficacité de nourriture tellement remarquable, qu'elle a été primée "première" à tous les concours auxquels elle a participé. Dans les essais d'échantillons pris au hasard en New Jersey qui viennent de se terminer, les X-300 Leghorns ont pondu 265.9 oeufs par 3.94 livres de nourriture pour chaque douzaine d'oeufs (volatiles à terre).

**Garrison Golden Sex Links**

Les poulettes sont rouge-or—male White Columbian. Ces productrices d'oeufs bruns, vigoureuses et des plus efficaces, pondent de beaux oeufs bruns-dorés—des oeufs de la plus grande dimension de n'importe quelle race—en outre, leur conversion de nourriture est telle qu'on n'en trouve pas d'habitude dans les races lourdes. Veuillez nous écrire aujourd'hui même pour tous renseignements concernant la race d'élevage Garrison et les droits d'exclusivité.

**GARRISON VANGUARDS  
PARA MAS PESO—MAS CARNE**

Garrison Vanguards son el resultado de 28 años de cría de raza pura Cornish. Ud. obtendrá más rendimiento—más carne de pechuga—un acabado más fino en toda etapa del desarrollo. Garrison Cornish son las aves para carne de calidad. Los Vanguard son perfectos para pollos de asar — pollos de hornear — capones.

**GARRISON X-300 LEGHORNS**

X-300 Leghorns tuvieron el promedio más alto para 2 años en los ensayos al azar del Estado de Pennsylvania. La X-300 Leghorn, un cruce de dos de las razas más antiguas de EE.UU., tiene gran vigor, la mejor, calidad en huevos, y una eficiencia de alimentación tan notable que ha salido "primera" en todos los concursos en que ha sido ejemplar. En el ensayo al azar de New Jersey recién completado, a X-300 Leghorn puso 265.9 huevos con 3.94 libras de comida por docena de huevos (aves de piso).

**GARRISON GOLDEN SEX LINKS**

Las pollas son de color rojo dorado — machos White Columbian. Estas fuertes y muy eficientes ponedoras de huevos pardos producen huevos hermosos de color pardo dorado — del tamaño de huevos más grande de todas las razas. Cuentan con una conversión de alimentos poco común entre las aves pesadas. Para consultas sobre las aves de cría Garrison, y sobre representación, escribanos hoy mismo.

**EARL W. GARRISON, Inc.**

**BRIDGETON 20  
NEW JERSEY, U.S.A.**

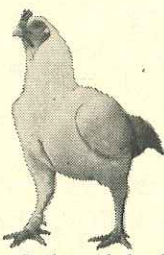
\*Entered by Stever

For free information, write the number 30 on post card.

**Garrison's  
3 for Profit  
NOW AVAILABLE  
EVERYWHERE**

**GARRISON  
VANGUARDS  
FOR MORE WEIGHT—MORE MEAT**

Garrison Vanguards are the result of 29 years of pure Cornish breeding. You will get more yield — more breast meat — a finer finish at all stages of development. Garrison Cornish are the quality meat birds. Feed conversion less than 2 lbs. of feed per lb. of meat. Vanguards make wonderful broilers, roasters, capons.



**GARRISON  
X-300 LEGHORNS**

X-300 Leghorns had the highest 2-year average in the \*Pennsylvania Random Sample Test. The X-300 Leghorn, a strain cross of two of America's oldest blood lines, has great vigor, top egg quality, and a feed efficiency so outstanding that it has placed "first" in most contests it has ever entered. In the New Jersey Random Sample Test X-300 Leghorns laid 265.9 eggs with 3.94 pounds of feed per dozen eggs (floor birds).



**GARRISON  
GOLDEN SEX LINKS**

Pullets are golden red — male White Columbian. These hardy and most efficient brown egg producers lay beautiful golden brown eggs —biggest egg size of all breeds, over 80% large and extra large. Pa. Test — have a feed conversion not usually found in heavy breeds.

For inquiries on Garrison breeding stock and franchise, write us today.

**BRIDGETON 20  
NEW JERSEY, U.S.A.**

\*Entered by Stever

it is difficult to control down-drafts, especially during the rearing period in winter months.

**Like Slats and Litter**

In the houses with single droppings pits, one-third of the floor area is covered by wire or slats and two-thirds with deep litter. In the houses with double droppings pits, half of the area is covered by wire or slats and the other half with deep litter. The Laughton Company believes the strength of slats makes slats preferable to wire.

Each house is divided into nine pens. Each pen holds 900 birds at the start of production. Allowing for mortality and culling, this will provide about 7,500 birds in each house at the beginning of the laying period.

One gas brooder per pen is used for brooding. The brooders can be used as space heaters during the winter months if necessary.

**Lighting Program**

The lighting is provided by incandescent bulbs. Laughton reports that fluorescent lights tend to create pools of light and dark patches.

Two lines of lights run about 15 ft. (4.57 meters) from the sides of the house. The light intensity is based upon 600 watts per 200 sq. ft. of floor space.

Birds have 24 hours of light for the first two or three days of their life. At three days and until eight weeks of age, light is reduced to 18 hours a day. The light is then decreased by ¼ of an hour per week so that at 19 or 20 weeks, the birds have 10 hours of light. At this time, the first eggs are usually laid and the lighting is then increased by ½ hour per week or slightly more, if necessary, to insure 14 hours of light just before the peak of production.

From this point on, another three hours of light can be provided when necessary, to hold production, as long as the light does not exceed 17 hours.

**Use Automatic Feeders**

All houses have automatic feeders. In the single droppings pit houses, one feeder runs along the slats and one over the litter area. The automatic feeders are supplemented by hand feeders.

In the double droppings pit houses, an automatic feeder runs along each dropping pit. They are supplemented

**VACCINATION  
ANSWERS**

**Choose from Dr. Salsbury's full line  
of proven poultry biologics**

Dr. Salsbury's full line of proven poultry vaccines and bacterins offers you a wide choice of versatile, effective biologics to protect poultry health.

Choose the Newcastle vaccine to meet your flock needs—your own methods of management. NEWCASTLE WAVAC lets your chicks vaccinate themselves while they're drinking. NEWCASTLE SOLUVAC offers you a choice of intranasal, spray, drinking water, or wing-web applications. For older birds, choose NEWCASTLE VACCINE—Dust, or new Killed Virus NEWCASTLE VACCINE for injection into individual birds.

Where Newcastle disease—along with infectious bronchitis—is a problem, choose from these effective combinations: NEWCASTLE-BRONCHITIS, NEWCASTLE-BRONCHITIS SOLUVAC, or NEWCASTLE-BRONCHITIS—Dust. If bronchitis alone is a problem, choose potent BRONCHITIS SOLUVAC for spray, intranasal, or drinking-water use.

Act against other costly diseases, too, with these quality biologics from Dr. Salsbury's:

FOWL LARYNGOTRACHEITIS VACCINE effectively prevents this highly contagious disease.

FOWL POX VACCINE provides lasting immunity

against fowl pox. For protection from the first day, use mild BROILER VAC VACCINE.

PIGEON POX VACCINE provides fast—but only temporary—immunity to fowl pox.

AVIAN ENCEPHALOMYELITIS VACCINE, given to pullets, prevents epidemic tremor through the production period—stops transmission of this disease through eggs to chicks.

AVISEPTICUS-GALLINARUM BACTERIN gives quick, short-term protection against fowl cholera and fowl typhoid.

PASTEURILLA AVICIDA (Fowl Cholera) BACTERIN is emulsified, provides long-lasting protection against fowl cholera.

Get more information on these versatile vaccines and quality bacterins from Dr. Salsbury's. Write or call your Dr. Salsbury's distributor, or contact:

EXPORT DEPARTMENT  
**Dr. SALSBUURY'S** LABORATORIES  
Charles City Iowa, U.S.A.  
Cable Address: SALABS

For free information, write the number 18 on post card.

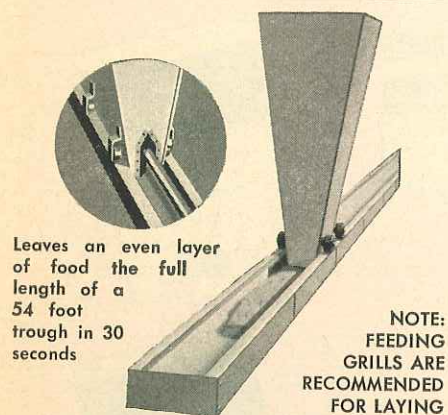




Narrow cage house now available in a complete package unit. Double your capacity (allows two birds per 10" cage). Available in 8"-10"-12" sizes. Aisle in center gives greater labor efficiency. Single deck, double deck, back to back, and pyramid cages. Write for complete facts and prices. You always get More for Your Money at

**LAWLER LAYING CAGE MFG. CO.**  
MONTEVALLO, ALABAMA, U.S.A.  
Phone MO 5-7292 P.O. Box 102

For free information, write the number 22 on post card.



Leaves an even layer of food the full length of a 54 foot trough in 30 seconds

NOTE: FEEDING GRILLS ARE RECOMMENDED FOR LAYING HENS AND TURKEYS

FRENCH PAT. 1203024

For free information, write the number 5 on post card.

## CUT COSTS ON POULTRY FEEDING!!

### HEMPSALL'S "QUICK FEED" HOPPER & TROUGH COSTS ONLY

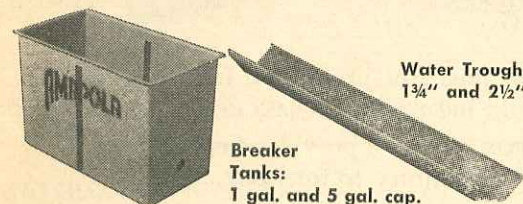
£55. 0. 0 per 100 ADULT BIRDS.

F.O.B. ENGLAND

AGENTS OR MANUFACTURERS REQUIRED — WRITE for details to —

**N. W. Hemsall Ltd., Oakham Farms**  
Walesby, Newark, Notts., England

## REINFORCED FIBERGLASS for economical, efficient water handling in cage operations



Water Troughs 1 3/4" and 2 1/2"

Breaker Tanks: 1 gal. and 5 gal. cap.

WILL NOT CORRODE BUCKLE, EXPAND OR CONTRACT — NOR GET BRITTLE WITH AGE

### AMAPOLA POULTRY EQUIPMENT

P.O. Box 695 HEMET, CALIF., U.S.A.

## DISTRIBUTORS WANTED

Quite often, U.S. companies write to POULTRY INTERNATIONAL asking the names of overseas distributors of feed, equipment, medications and various other products necessary to the poultry business.

In order to assist both manufacturers and such distributors, POULTRY INTERNATIONAL is preparing a list of these distributors.

If you would like to be included on this list for consideration by U. S. exporters, please contact

**Mr. D. C. Baker**  
**POULTRY INTERNATIONAL**  
**Department D**  
**Sandstone Building**  
**Mount Morris, Illinois, U.S.A.**

The information should include your name, the name and address of your firm and the general line of products which you are interested in handling.

"Cape Gate — manufacturers for more than 33 years, renowned for their famous Blue Cage Battery Laying Equipment — invite applications for overseas representation in other countries. Please reply to: Cape Gate & Fence, P.O. Box 17, Parow, Cape Town, Republic of South Africa."

Poultry International is read by poultry businessmen everywhere outside the Americas. Advertising rates on request. Watt Publishing Co., Mt. Morris, Illinois, U.S.A.

with hand feeders hanging over the litter area.

Laughton added four runs of automatic feeders in one of its recent installations. The company considers the capital spent on the extra feeders worthwhile because they eliminate the need for supplementary hand feeding.

Floor standing waterers have been installed, one five-foot (1.52 meter) waterer per 100 birds.

Individual nests have been installed at the rate of one hole for five birds. Laughton prefers the two-tier to three-tier nests. The position of the nests depends on whether or not the house has single or double droppings pits. In the double droppings pit houses, the nests are placed back-to-back in the center of the house. This, however, cannot be done in cross-ventilated houses because the nests obstruct proper air movement.

In the single droppings pit houses, which are cross-ventilated, the nests are placed adjacent to the droppings pit. In this position, they do not interfere with proper ventilation. Although the position does not provide the most efficient arrangement for egg collecting, it is easier to get the birds to use the nests. The percentage of floor eggs experienced by Laughton has averaged about four to five percent.

### Housing Costs Calculated

Laughton considers the total cost of a house similar to the one described to be between 17/- and 18/- (\$2.38 and \$2.52) per sq. ft. The figure includes house, equipment, electrical installation, water installation, etc., and a reasonable amount for site work. It does not, however, include the purchase of the land, access roads and workers' quarters.

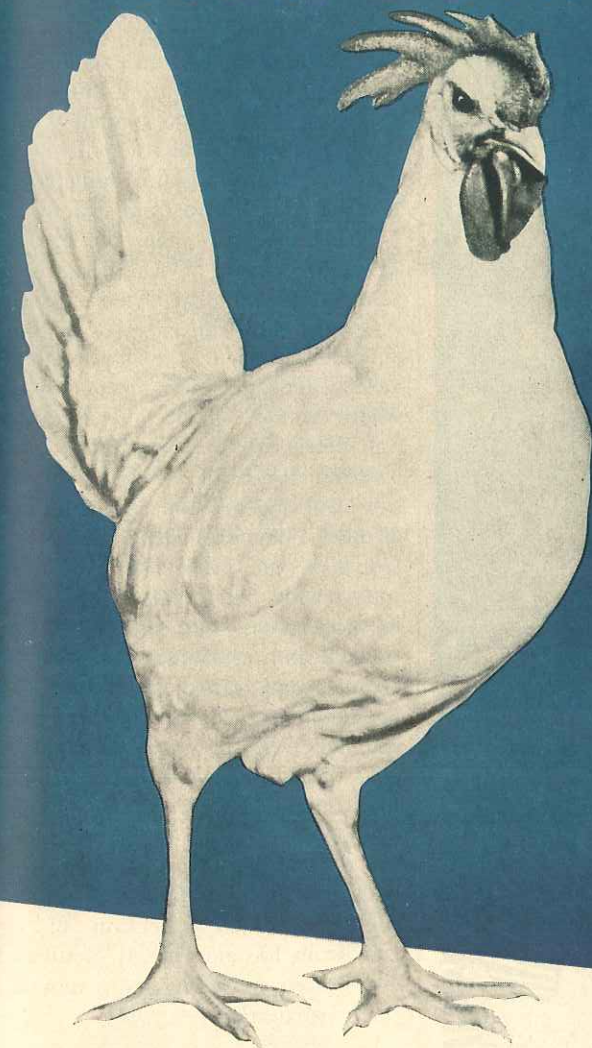
### Management Program

All birds on each farm are the same age. They are reared together from day-old as part of the disease control program. Since the birds are not moved, any stress which would be caused by movement near the beginning of the laying period is eliminated.

Chicks are started in cardboard surrounds (chick guards) beneath the brooders with adequate feeding and watering equipment. The automatic feeders cannot be used at this point, so egg trays and broiler-type hand feeders are used to hold the feed.

At about 10 days of age, the birds are debeaked. At about seven days of age, the cardboard is removed to pro-

## GHOSTLEY'S announce Pearl 63...



### Either Pearl Bird Available

Your authorized Pearl distributor also offers you the Ghostley Pearl. This is the white egg layer that has been doing a wonderful job for poultrymen throughout the world. Here is a comparison between the two Ghostley birds.

|                 | Pearl 63       | Pearl          |
|-----------------|----------------|----------------|
| Egg production  | 245-275        | 240-270        |
| Egg size        | 25.2 ozs./doz. | 25.6 ozs./doz. |
| Body weight     | 4.38 lbs.      | 4.25 lbs.      |
| Feed conversion | 3.9 - 4.2 lbs. | 3.7 - 4.2 lbs. |
| Haugh Units     | 88             | 88             |

See your authorized Pearl distributor or write Ghostley's for FREE literature and complete details on both birds.



**GHOSTLEY'S**  
**Poultry Farms, Inc.**  
Anoka, Minn., U.S.A.

## NEW profit layer from Ghostley's Research

After 18 years of intensive research, Ghostley's proudly announce the release of the Ghostley Pearl 63. This new profit layer has been thoroughly tested on Ghostley's six research farms, in the field throughout the United States as well as in many countries in Western Europe and Central America. Careful analysis of this vast amount of data clearly showed the Pearl 63 met Ghostley's high standards of performance.

The Pearl 63 looks like the present Ghostley Pearl. Performance is slightly better. Superb egg quality has been retained in the new Pearl 63. Excellent livability plus high, consistent egg production are the two most important profit-making factors carried by the Pearl 63.

### AUTHORIZED GHOSTLEY PEARL DISTRIBUTORS

**Model Poultry Farm of Greece**  
Paralia Aspropyrgou  
Athens, Greece

**Mr. Basilios Tzanetakis, Pres. Cooperative Avicole Kalamata**  
3 Rue Messinis  
Kalamata, Greece

**Mr. Paul Harnish, Poultryman**  
Inter-Church Service  
Ioannina, Greece

**Vagelis George Pantazis**  
Megara, Greece

**Meletios Koursoopoulos**  
Cooperative to Sell Poultry Products  
Megara, Attikis, Greece

**Aris Psarianos Poultry Farm**  
Megara, Greece

**Dimetre Zouras Poultry**  
109 Rue Solonos  
Athens, Greece

**Basile Boufidis P. Farm**  
27 Rue  
Constantinopleos, Agii,  
Anarggri, Athens, Greece

**H. Hunziker**  
Geflugel Farm Egghof  
Aadorf, T. G., Switzerland

**Nikos Jean Mpeis Poultry Farm**  
64 Rue  
Michopolou, Megara, Greece

**Monsieur George Demaegd**  
Couvair de L'Andelle  
Romilly Sur Andelle  
Eure, France

**Ghostley Italy**  
Marcello Germani  
Arturo Aquino  
18 Via Durini  
Milano, Italy

**Antonios E. Zouras Poultry Farm**  
Bourvoura-Kinourias, Greece

**Louis Decherf-Vervaecke**  
Radinghem (Nord) France

**Ghostley Europe**  
Levrau Brothers  
Olsene, Belgium

**Grigorios Panajiotou Doris Poultry Farm**  
Wea Tirmis  
Nafplion, Greece

**Ghostley Deutsche**  
Horst Ritter  
Geflugelzucht-Schwiederstorf  
Kries-Harburg, Germany

**Mr. G. Kanhai**  
P. Soni  
5 Hannaslust  
Pad van Wanica Pa.  
Paramaribo  
Suriname, S. A.

**Stelios A. Garoufalos Poultry Farm**  
Loutraki, Korinthias, Greece

For free information, write the number 16 on post card.



**NEW!** the simplest, most trouble-free valve ever offered.

# FOX "80"

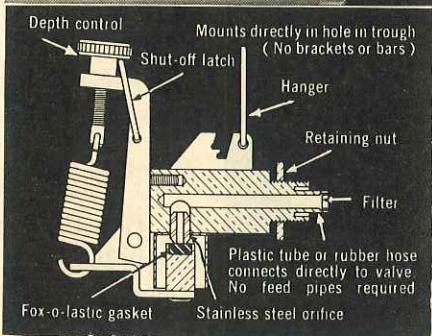
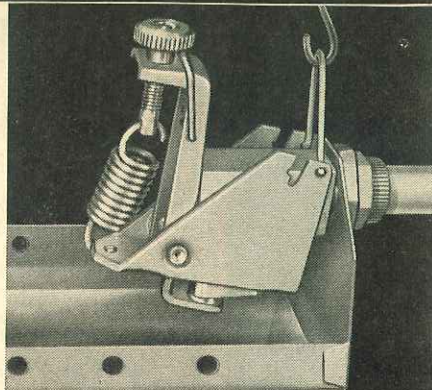
constant level  
**WATER VALVE**  
for hanging waterers

Occupies less than 1" x 2" of trough space and is entirely above water.

Automatically maintaining a constant water level in hanging waterers, regardless of line pressure, the simplified FOX "80" Valve mounts directly in a hole in the trough end. It needs no mounting bracket or bar, no float box, no feed pipes. It has no internal moving parts, no floats and passes large particles of rust or dirt. A manual shut-off stops water flow for trough cleaning and when not in use.

The cost of the FOX model is low, installation is quick and easy, operation is trouble free.

Purchase troughs equipped with the FOX "80" or install them on your present troughs. You'll be way ahead. FOX PRODUCTS COMPANY, Philadelphia 41, Pa.



**ASK YOUR DEALER**

For free information write the number 2 on post card.

PEDIGREED SINCE 1915  
**Parmenter CHICKS**



**Famous For Nearly Fifty Years**

**PARMENTER REDS.**  
consistent winners of Egg Laying Tests

**PARMENTER PM1**  
The new strain-cross, with high production and top feed efficiency

**PARMENTER WHITES**  
White birds with cross-breed vigor and dark brown eggs

**PARMENTER Sex Link**  
The time-tried "black pullet". Excellent livability and extra large eggs

Write for name of your nearest distributor

**Parmenter Reds Inc.**

Franklin, Massachusetts U.S.A.

For free information, write the number 6 on post card.



• Peel's "Cornish" male

• Peel's #132A female

— Now available at the new low Canadian dollar exchange rate.

For information write or wire

**Peel's Poultry Farm Ltd.**

Port Perry, Ontario, Canada

Cable — "Peelchix"

For free information, write the number 26 on post card.

vide the birds with greater floor area. Between 20 days and three weeks of age, the birds have the run of the entire litter area of the house. At this point, the automatic feeders are used with the hand feeders.

Between six and seven weeks of age, the birds are confined to the slatted or wire floored area for six days. Additional hand feeders and waterers are put in the area to insure an adequate supply of feed and water. This maneuver reduces the bird's tendency to not use the droppings pits when the lights go out. The use of dim lights for this purpose was found unsatisfactory.

At 16 weeks of age, the birds are again debeaked. Cockerels are also taken out and any necessary culling is done. The birds are vaccinated against Newcastle (fowl plague) disease at debeaking time, at two or three weeks of age, and again at the second debeaking at 16 weeks.

When the birds are in full production, the eggs are collected three times a day. They are gathered from the fronts of the nests and put directly into plastic-covered wire baskets, or, in some cases, into plastic egg trays stacked on a platform suspended from an overhead track. The latter method is probably better and quicker but its use depends upon the percentage of eggs that must be cleaned and, therefore, handled twice.

The eggs are then taken into the egg rooms where they are cleaned and packed into cases. Because of its large size and daily collection of eggs, Laughton has no special facilities for egg storage as the eggs are moved directly to market.

### 12-Month Laying Cycle

The Laughton system allows a 12-month laying period. But depending upon the percentage of production and egg prices toward the end of the cycle, the birds may, in some cases, be kept another month or even sold a few weeks before the 12-month period is concluded.

At the end of the laying cycle, all birds are removed from the farm as quickly as possible. The houses are cleaned and disinfected. The equipment is removed, steam cleaned and disinfected. When the manure and litter is removed, it is taken completely clear of the farm to minimize the risk of disease being carried from one growing cycle to another.

Four to five weeks elapse before the next batch of day-old chicks arrive.

Each farm has a chief poultryman and an assistant poultryman. Until the laying period begins, no additional help is necessary. During the laying period, additional women are employed to clean and pack eggs. In most cases, they are the wives of the poultrymen and local girls. At peak production, three girls on each farm are used in addition to the two poultrymen.

It is an advantage for the poultrymen to take their holidays during the rearing period when one man can handle the chores by himself for awhile. However, if this is not always possible, additional casual labor is employed.

The poultrymen receive a bonus depending upon the overall performance at the end of the 18-month cycle (day-old to the end of the laying period). However, a small amount is paid quarterly providing the company is satisfied with the way in which the unit has been operated. The amounts are deducted from the total bonus due at the end of the cycle.

Laughton does not consider its system necessarily better or more profitable than other methods of poultry production. But the firm does con-

sider that completely controlled-environment houses are essential to obtain optimum performance and that whatever system of housing is used, management plays as big a part in the results as the housing itself.

### Philippine Firm to Distribute Colonial Layers

Colonial Poultry Farms, Inc., Pleasant Hill, Missouri, U.S.A., and Earthwealth (Phil.) Ltd., Manila, Philippines, have formed Colonial Hatchery Farms to hatch and distribute Colonial's True-Line laying stock in the Philippines. The firm expected to be in full production by December 1.

### New Company to Make Vitamin A in Japan

Japan Nopco Co., Ltd. has been established as a jointly owned subsidiary of Nopco Chemical Co., Newark, New Jersey, U.S.A., and Sumitomo Chemical Company, Ltd., Osaka, Japan. The firm will produce synthetic Vitamin A in a new plant at Osaka for sales throughout the world.

## ALWAYS USE HEAT WHEN TREATING THE BEAK

Debeak baby chicks & birds of all ages FAST and safely with the cauterization provided by LYON Super Debeaker\*

Cauterization is a proven medical practice. It prevents spread of infection, promotes healing, stops loss of blood and retards beak regrowth. You can avoid ragged and sore beaks—and throwing your birds off feed—by using the Lyon Super Debeaker.\* It stops feed wastage. It can be used for wing and toe clipping and for older birds as well as chicks. It also stops barebacks due to feather picking.

Super Debeaker\* comes up to heat within 5 seconds—any temperature you wish! Cuts and Cauterizes in one operation. No bloody chick boxes. Leaves both hands free to handle birds. Recommended by authorities. Lyon Super Debeaker costs only \$32.25 for 110 V. 50-60 cycle unit or \$33.35 for 220 V. model. Add \$5.00 for delivery by Surface Parcel Post. Satisfaction guaranteed. (Add \$3.25 for BC attachment for debeaking day old chicks—fits any Super Debeaker\*.)

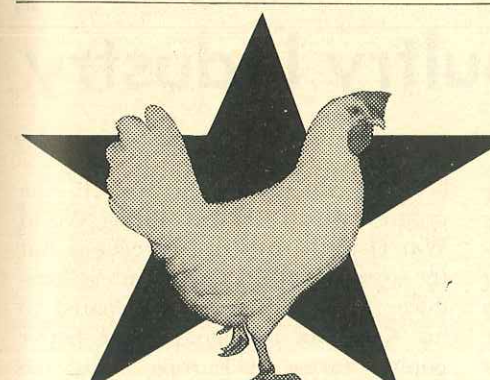
\*Reg U.S. Pat. Off.

Also ask for FREE CATALOG of electric poultry supplies.

**LYON RURAL ELECTRIC CO.**

Dept. PL-1 San Diego 12, California, U.S.A.

For free information, write the number 13 on post card.



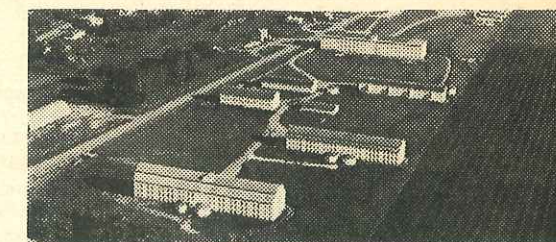
## WELP-LINE® LAYERS

Win 5th Iowa Laying Test!

Welp-Line 937 layers topped all other entries in the 1961-62 Fifth Iowa Laying Test with a Performance Index rating of 3.94 . . . 57 points better than the average of all entries in the test. Welp-Line 937 layers performed at or near the top of the test in ALL characteristics . . . proof of their profit-superiority!

**WELP-LINE® LAYERS AVERAGE 301 EGGS PER BIRD**  
**In 13th California Laying Test!**

Welp-Line 937 layers averaged 301 eggs per bird housed in the 13th California Test just completed. This was 22 eggs per bird better than the average of all entries in the test. Their \$4.04 Income per bird Over Feed and Chick Cost was \$0.46 better than the average of the entire test. Welp-Line 937 layers produced one dozen 24 ounce eggs on each 3.8 pounds of feed consumed! Compare performance — and you'll choose Welp-Line layers!



### For Welp-Line® Associate Hatchery Program Details

— write —

**WELP'S BREEDING FARM**  
Bancroft, Iowa  
U.S.A.

For free information, write the number 24 on post card.

— write —

**WELP-LINE FRANCHISE DISTRIBUTOR OVERSEAS AREA**  
**HAMERSVELD, N.V.**  
16, Zwarteweg  
Hamersveld, Holland

POULTRY INTERNATIONAL—January, 1963—39