

Der PPLO-Freie Weg

Dies ist der zweite in einer Reihe von Aufsätzen, die das Konzept der Brathühnerzucht erklären. Alle Phasen der Produktion müssen die spezifischen Betriebsmethoden folgen um ein PPLO-freies Programm durchzuführen. Der Lieferungs-farm, die Brutstätte, der Brathuhn-züchter und das Schlachthaus, alle haben Schlüsselhandlungen zu erledigen um das Intakthalten der PPLO-freien Kette zu sichern. Der nächster Aufsatz wird besprechen auf welche Weise das Weitergehen dieses Programm gesichert werden musz.

Comment Empêcher le PPLO

Voici la deuxième partie d'une série d'articles expliquant comment empêcher cette maladie dans la production du poulet à rôtir. Pour lancer un programme de prévention contre le PPLO, toutes les phases de production doivent suivre une direction et pratique spécifiques. Le fournisseur, l'éclo-soir du producteur de poulets à rôtir et l'atelier d'abattage, ont chacun une fonction primordiale pour assurer que la chaîne d'exemption du PPLO reste intacte. Le prochain article vous montrera comment assurer la continuité du programme.

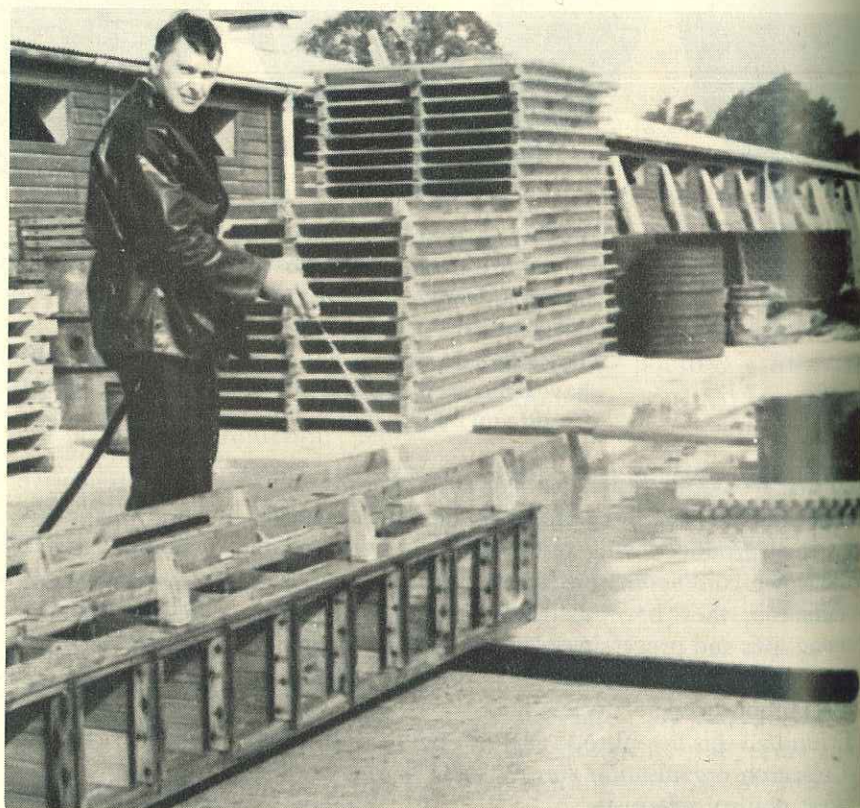
Come Andare Esenti da PPLO

Questo è il secondo in una serie di articoli che speigano il concetto di esenzione da PPLO (mali pleuro-polmonari) nella produzione di polli da speido. Per eseguire l'esenzione di PPLO, tutte le fasi di produzione devono seguire pratiche specifiche di conduzione. La fattoria di rifornimento, la ditta incubatrice, gli allevatori di polli da spiedo e gli impianti da macellazione, hanno tutti importanti funzioni da eseguire per assicurare che la catena di esenzione da PPLO rimanga intatta. Nel prossimo articolo si discuterà come accertarci che il programma continui.

Second in a Series

How to Go PPLO-Free

SUMMARY: This is the second in a series of articles explaining the PPLO-free concept in broiler production. To implement a PPLO-free program, all phases of production must follow specific management practices. The supply farm, hatchery, broiler grower and slaughtering plant each has key functions to perform to insure that the PPLO-free chain remains intact. The next article will discuss how to insure that the program continues.



CLEANING AND DISINFECTING the equipment in a broiler breeder house can be more efficient with the proper equipment. A power sprayer is used to remove dirt and manure from nests. The nests are soaked in a strong disinfectant bath (background) before spray washing and then dipped and a fresh solution of disinfectant after washing.

• After deciding to go PPLO-free, the broiler manager attacks the second phase of attaining a "free" status: How to implement the program. Experienced poultrymen and the primary breeder organization recommend individual examination of each production phase.

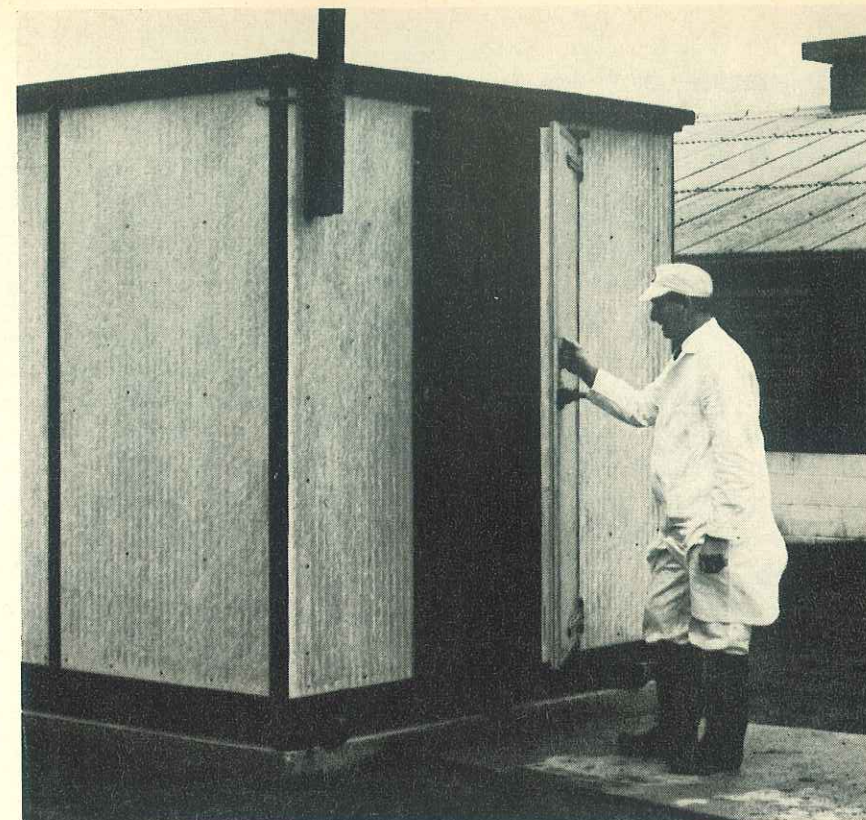
After the primary breed organization provides PPLO-free parent stock, the responsibility for assuring continuation of the "free" status rests with managers of the parent stock farm, hatchery, grower and slaughtering plant.

The Supply Farm. Because the supply farmer is assured of receiving "free" stock from the breeder, he assumes the greatest responsibility for maintaining the status. Yet he can count on immediate benefits from lower flock mortality, more egg production and higher per cent hatchability of eggs than the supply farmer which does not maintain the "free" status.

Nearly every supply farmer has experienced the disappointment of certain flocks performing below standard for no apparent reason despite good management. The cause could have been *Mycoplasma Gallisepticum*. Birds free of M.G. remove the problem by reducing the effects of sub-clinical disease factors and secondary infection complications.

The supply farmer needs to take the following action to insure that he receives the benefits from PPLO-free birds and to keep his flock free.

1. Allow no other poultry of any kind or different age on the same site as the PPLO-free bird.
2. Cover air intakes with 1/2-inch (1.27-cm.) wire mesh to keep out wild birds and rodents.
3. Raise males separately from pullets to 20 weeks of age.
4. Rear males and females intensively.
5. Use no antibiotics or other



PROPER EGG storage facilities helps maintain the PPLO-free status. An egg holding room should provide temperature and humidity control to maximize hatchability of the eggs from broiler breeder flocks.

MECHANICAL CLEAN-OUT speeds the turn-over of flocks. Concrete floors are needed to insure complete disinfection and thorough clean-out.



Hygiene Problems?

Lomasept®

is a highly active, reliable, around, one step, broad-spectrum disinfectant.

Lomasept

kills bacteria, fungi, viruses, inveterate parasites such as coccidia oocysts, worm eggs and worm larvae.

Lomasept

has a vast range of effectiveness and serves excellently for the disinfection of houses of poultry, cattle, pigs, horses, rabbits, etc.

Lomasept

stands for hygiene and hygiene means safety. Try Lomasept and provide unique sanitary conditions in your operation.



Are you interested in Lomasept? We still look for some well established distributors.

Tier-Arzneidienst

**Lohmann & Co. KG.,
Cuxhaven/W. Germany**

Success
through
Experience

medication without consent of the hatchery health department.

6. Permit no feed additive other than certain coccidiostats.

7. Avoid handling birds individually. When necessary for blood testing, culling, etc., handling of birds should be controlled by a flock supervisor who should insure that all operators follow a proper hygiene program.

8. Allow only the poultryman regular access to breeder pens. Before visiting any other poultry, he should change his shoes and clothing. Flock supervisors should be provided with "sterile" footwear and overalls which can be kept on the farm in a poly-ethene bag and used on each visit.

9. Put concrete floors in all houses.

10. Keep all houses locked to prevent unauthorized entry.

11. Place flocks of different ages at least 1,000 feet (300 m.) apart.

12. Avoid common entrances to different farms.

13. Dispose of dead birds in a proper pit or an incinerator.

14. Provide a disinfectant foot dip and a brush for cleaning footwear at the changing room.

15. Obtain shavings in bulk if possible; if not, supply clean sacks.

16. Clean up farm thoroughly between flocks.

17. Keep a record of all visitors.

18. Keep domestic animals out of flock houses.

The Hatchery. Effects of a PPLO-free program are most measurable in the hatchery. When chicks hatch out, the presence of PPLO in chick embryos becomes most noticeable. PPLO-free stock will greatly reduce the dead-in-shell embryos and cull chicks by minimizing complications of bacteria infections.

The rules for a hatchery hygiene program include:

1. Collect PPLO-free eggs in separate boxes which are distinguishable from other boxes.

2. Fumigate the boxes at the hatchery on "free" units separately before they are re-used.

3. Use plastic trays to enable re-use and regular disinfection between collections.

4. Collect hatching eggs from "free" farms first to reduce risk of spreading PPLO through vehicles.

5. Set sufficient eggs to fill a hatcher. When eggs are mixed in hatcher, they can no longer be considered PPLO-free.

6. Use a special colored stamp for PPLO-free eggs to avoid mistakes during transfer from setter to hatcher.

7. Hatch PPLO-eggs on Mondays during the transition period of building up the ratio of PPLO-free eggs. This allows a maximum interval from the previous hatch.

8. Complete handling of PPLO-free stock before



For Any One of a Dozen Farm Jobs Make Your Moves...with a **BOBCAT**

It scoops—scrapes—lifts and loads. It trenches—ditches or digs post holes. The positive 4-wheel drive rolls easily over rough or soft ground.

Short (just 80" long) stable and strong. It will raise a thousand pounds over 8 feet. Simple to operate—no gear shift—but it moves smoothly from forward to reverse. And it can make a complete turn in its own tracks. Visit your Bobcat dealer. See why a Bobcat belongs on your farm.



AUSTRIA Bishopgate Steels G.M.B.H., 1010 Wien 1, Schuberting 9/11, Vienna. Tel: Vienna—73 53 40
BELGIUM Wynmalen & Hausmann Belgique S.A., 1878/1880 Chaussee de Haecht, Haren, Brussels 13. Tel: Brussels—15 18 58
DENMARK Preben Lange, Midtager 22, Glostrup. Tel: Copenhagen—962161
FINLAND Aktiebolaget Ekstroms Maskinaffar, P.O. Box 10310, Helsinki 10. Tel: Helsinki—11421
NETHERLANDS Wynmalen & Hausmann n.v., Bunnik—U. Tel: Bunnik—1541
SPAIN Trimport S.A., Juan Ramon Jimenez 2. L.2. Madrid 16. Tel: Madrid—250 49 41
NORWAY A.S. Auto Supply Co., Lilletorget 1, Oslo 1. Tel: Sentralbord 420680

MELROE LIMITED

Dept. F.F. 36, School Lane Industrial Estate,
Chandlers Ford, Eastleigh, Hampshire, England. Tel: Chandlers Ford 2477—2084

taking off other hatches.

9. Make sure that no other chicks are mixed with the PPLO-free stock at any stage. Human error is the greatest risk to the PPLO-free status.

The Grower. Although the breeder flock farmer and the hatchery receive marked benefits from a "free" status, the broiler grower reaps benefits through increased growth rates, low mortality and high feed efficiency. Because its first effect is to retard growth, the broiler grower's biggest enemy is disease.

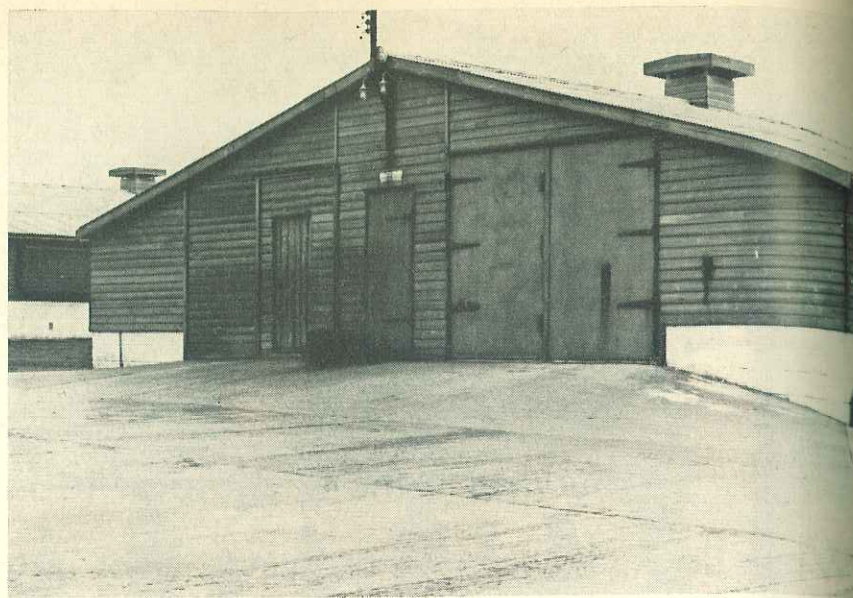
The grower has 2 choices with disease: 1. to cure or 2. to prevent. For effective cure, he must bear the cost of medication and realize that growth will have been retarded anyway.

By growing "free" broilers, he can avoid the sub-clinical effects of PPLO, thus he greatly reduces the risk of a costly respiratory disease outbreak. At the same time, he will achieve more of the bird's growth potential and improve feed conversion.

To maintain the PPLO-free status, the grower also has rules to follow. The standards for growers,



PERSONNEL SHOULD be properly equipped with a full set of clothing. A boot disinfectant bath at the entrance to each house helps prevent disease spread. The sign on the door makes sure that everyone knows the unit is PPLO-free.



CONCRETE APRONS in front of the poultry houses makes cleaning and disinfecting a swifter and more sure job. It is a good idea to spray the roadways with disinfectant immediately before taking in a new flock of birds.

however, probably vary more in this phase of the program than anywhere. The danger of small losses in performance can be illustrated by assuming the loss of 1 ounce in liveweight of a broiler (at 18 cents a pound) represents US \$52.80 on a flock of 5,000 birds. The rules for the grower include:

1. Have a one-age, one-stock site.
2. Depopulate between flocks and completely clean the house (including litter).
3. Insure that vaccination teams do not bring infection onto the site.
4. Provide clothing, boots and headgear.
5. Cover windows and all openings with 1/2-inch wire mesh to keep out wild birds and rodents.
6. Construct house with concrete floors.
7. Keep houses locked to prevent unauthorized entry.
8. Keep a record of all visitors.
9. Take special care with feed deliveries and do not allow delivery men entrance to the house.
10. Obtain shavings from a clean, reliable source and insure that they have not been stored in dirty sacks.

11. Keep domestic animals out of the house.

The Processor. Any PPLO program applied by an integrated organization should not neglect the processor, because he is the final link. The processor knows the significance of getting the maximum yield from each flock.

Broilers which have PPLO are more susceptible to disease outbreaks and will achieve less than optimum carcass yield.

When the processor knows he is receiving PPLO-free birds, he can predict output more accurately, count on consistent conformation and expect increased output. The following rules when applied by the processor will help to insure success throughout the integrated enterprise:

1. Insist on growers using PPLO-free stock.
2. Make sure that broiler fieldmen understand the PPLO-free program.
3. Encourage growers to keep the stock clean throughout the cycle.
4. Help prevent the spread of disease by thoroughly disinfecting crates between collections.

5. Insist that catching crews comply with disease precautions applied on each site.

Editor's note: Material for this series of articles was supplied by Mike Dines, marketing manager, The Cobb Breeding Co. Ltd., Cut Hedge Farm, Braintree, Essex, England.

Turkeys Do Better In Warmer Pens

Cool temperatures in pens can make a marked difference in the profits a turkey grower realizes for a season's work.

Raising turkeys at pen temperatures as low as 55°F. (12.2°C.) contributes to high mortality rates and increases condemnation by processing plants. Turkeys also eat more feed without corresponding weight gains.

An high percentage improvement resulted at a pen temperature 66°F., (18.9°C.) compared

to 55°F. pen temperature.

At the warmer temperature, there were fewer processing plant condemnations, lower mortality, a lower feed conversion ratio, and higher weight gains. Based on these findings, specifications for turkey housing and environmental control have been developed to reduce condemnations and aid in keeping disease-free flocks isolated from outside contamination.

These findings were made by U.S. Agricultural Research Service agricultural engineer W. A. Junilla in cooperation with scientists of the Minnesota USA Agricultural Experiment Station.

Letter From Reader

Dear Sir,

We were very interested in your article "Watering Cage Layers" in the March, 1968, issue of "Poultry International".

We would like to correct some of the

statements made with regard to nipple drinkers. Cage manufacturers in Britain fit nipple drinkers as a standard fitting. Conventional water troughs are optional and used on less than 10% of cages sold. Continental Europe is rapidly following this pattern. The "dewdrop" drinker was a brass body with a spring loaded ball in the end, which was discarded here 30 years or more ago. The present stainless steel nipple drinker designed and patented by us 8 years ago and as illustrated on your front page, does not pass a droplet, as did the dewdrop, but passes 4 fluid ozs. of water per minute, at 6" head of water, when operated.

We sell over 2,000,000 Mono-flo nipples per year to British cage manufacturers, most of whom fit the P.V.C. tubing and nipples down the centre of the cages, only some wood and wire cages, due to the design, are fitted in the front over the food troughs, though most conversions of old cages are fitted on the front.

A. Mallison, Director
Frank Lister Ltd.
Emstead Works
Ovenden, Halifax, England

Vineland Poultry Vaccines

... for a program of dependable immunization against disease

- Newcastle Vaccine for use intramuscularly, intranasally and in the drinking water
- Killed-Virus Newcastle Vaccine
- Bronchitis Vaccine for use intranasally and in the drinking water
- Fowl Pox Vaccine
- Modified Laryngotracheitis Vaccine
- Fowl Cholera Bacterin
- Erysipelas Bacterin for turkeys
- Pigeon Pox Vaccine

VINELAND vaccines have been successful in all parts of the world for the prevention and control of Newcastle Disease, Bronchitis, Fowl Pox, Laryngotracheitis, Fowl Cholera and Erysipelas in turkeys. They are noted for their ability to produce a durable immunity with a minimum of stress.

For maximum effectiveness against disease under field conditions . . . for purity and simplicity of application, they are the finest poultry vaccines available today. Contact your nearest Vineland representative, or write direct for more information.

VINELAND
POULTRY LABORATORIES
VINELAND, N. J., 08360, U.S.A.

