

- 9 Working Group Immunology
- 6 Working Group General Radiology and Medical Physics
- 22 Satellite Station for Epidemiology, Bakum
- 11 Training and Research Station, Ruthe

## **Early history of Poultry Research**

The history of poultry disease research in Hannover can be traced back to 1834, when facilities of the Royal Medical Horse School were first used to investigate diseases of commercial and fancy poultry species as well as game and wild birds. The first publication on poultry diseases was on fowl pest (Künemann 1902), and many subsequent papers from different areas of research reflect the growing interest in poultry, its products and diseases. The first doctoral thesis was on Colibacillosis (Hempel 1912) and describes the reaction of the gastro-intestinal tract of healthy chickens to infections with Coli-Typhus bacteria. The first course offered to students was by Prof. Krüger (1930) on “Anatomy of Poultry and Research Mammals”.

## **Institute for Animal Hygiene and Poultry Diseases**

The basis for today's Poultry Clinic in Hannover was laid in 1949 when the Senate decided to reorganize the existing clinics according to species. Among other institutes, departments for animal hygiene and poultry diseases were planned. In 1955 the Senate decided to combine these two subject areas and in 1960 hired Prof. Irmgard Gylstorff, the first woman as head of the department.

Despite the provisional situation and limited space in the Chemical Institute, initially modest staff and research funding, remarkable scientific activities developed under her guidance. Since housing facilities for research animals which were not available in the old University quarters, students had to acquire diagnostic experience from ambulatory extension service in commercial poultry farms, and a laboratory was established for diagnostics and treatment of fancy and wild birds. Theory was taught in lectures on hygiene and internal medicine, and courses for further education were organized in cooperation with other University organizations. With her profound knowledge and immense energy, Prof. Gylstorff established a strong position for poultry pathology at the Veterinary University Hannover, which became recognized nationally and internationally. When the Veterinary Faculty of the University Munich established a department for poultry pathology, she accepted the call to become the first chairperson of the department.

## **Poultry Clinic**

During the 1960 the domestic poultry industry in Germany went through a period of dramatic changes and presented a range of challenges for veterinarians. The Senate reacted with the decision to split the institute and establish separate chairs for animal hygiene and poultry diseases. The author of this article Prof. Siegmann became the first chairman of the Institute for Poultry Diseases in 1966.

Based on the conditions negotiated at the beginning and recommendations of the German Scientific Council, the present Poultry Clinic was gradually built up. In 1968 the first part of a new quarantine unit was built, and two years later it was completed for in vivo disease studies and the maintenance of SPF flocks. In 1974 a new complex was built for three institutes on two floors, with excellent conditions for research projects which depend on close cooperation between colleagues specialized in different areas within the poultry clinic. Research, education and extension service benefit from this structural organization (Fig. 1).

The Policlinic for Fancy and Wild Birds remained at the old location, to keep it easily accessible by public transport to meet the growing demand. The move into rooms of the old apothecary and later on pathology improved the working conditions substantially and contributed to the recognition of this team of experts.

The laboratory equipment was continuously expanded and modernized to keep up with new developments, notably after Prof Neumann became head of the clinic in 1992 and new techniques for molecular genetics and immunological analyses were added.

At the end of the 1970s the staff of the poultry clinic had 28 employees, including 10 with academic degrees. In addition, a variable number of graduate students and guest scientists from different countries were always actively involved in research projects and contributed to a lively academic environment. Details who was involved in which project is documented in annual records of the University until 2008/09 (4), but unfortunately discontinued since then. The same goes for lectures offered each year, which provides a convenient basis for anybody interested in the changing priorities during this period of time. Diseases of poultry are a required course for all veterinary students since 1967.

Research reports from the Veterinary University of Hannover are listed annually (8) and add to more than 800 scientific publications, 150 dissertations and 6 habilitation theses since 1960 published by the Poultry Clinic staff. The topics of these publications reflect the range of subjects covered during the past decades.

### **Compendium of Poultry Diseases**

In view of the continuously growing information on etiology, diagnostics, prophylaxis and therapy it is impossible to include everything in university lectures which students need for their professional future, and students will hardly find time to keep up with new information from special literature. Realizing this demand for basic information, Siegmann (1971) published a “Compendium of Poultry Diseases”, mainly for students of veterinary science, to assist them in acquiring the necessary basic understanding of poultry diseases. The 7<sup>th</sup> edition was recently published (7).

The circulation of the Compendium increased over the years and benefited from updates contributed by many co-authors: Hinz, Kaleta and Lüders, Hannover (3<sup>rd</sup> ed.), thereafter by Monreal, Berlin, and Kösters, Munich. For the 6<sup>th</sup> edition, Neumann became co-editor, and 35 contributing authors from German speaking veterinary institutions in research, veterinary practice and administration cover all relevant aspects of poultry diseases. Originally planned to assist veterinary students, this Compendium has become the standard on poultry diseases in German.

### **Bi-annual Discussions among Poultry Disease Experts**

To bring colleagues from the Poultry Clinic and practicing veterinarians together, the Clinic invited a few veterinarians in 1967 for an exchange of ideas and experience on current disease problems. In view of the many unanswered questions exchanged, it was decided to meet semi-annually to continue the dialogue among colleagues. These meetings continue to this date, and the spirit follows the original intention of an open exchange among academic and applied poultry veterinarians.

On the occasion of the 50<sup>th</sup> meeting in 1996, Siegmann (6) recalled the early history of these popular meetings, and Salisch (5) presented a complete bibliography with authors, topics and keywords.

The continuing popularity of these meetings would not have possible without the significant contributions of many invited speakers and the contributions of colleagues during the subsequent discussions. Starting in 1996, Prof. Neumann organized the annual meetings, since 2011 Prof. Sylke Rautenschlein, the present director of the Poultry Clinic, continues the tradition.

### **Summary**

Poultry diseases are recorded as a subject at the “Royal Veterinary School” in Hannover as early as 1834. Since the 1960s, poultry and poultry diseases developed into an own subject at the Veterinary University Hannover. Initially integrated into the “Institute for Animal Hygiene and Poultry Diseases”, the present “Poultry Clinic” was developed.

In this paper, the history of the development is recalled with respect to teaching and research activities. The “Compendium on Poultry Diseases” and the “Discussions among Poultry Experts” are described as two remarkable activities of the Veterinary University in Hannover.

## **Fachgebiet “Geflügelkrankheiten” an der Stiftung Tierärztliche Hochschule Hannover**

(University for Veterinary Medicine Hannover, Germany)  
O. Siegmann

### **1. Vorgeschichte**

Die Beschäftigung mit Krankheiten des Federviehs in der damaligen “Königlichen Thierarzneyschule zu Hannover”, hervorgegangen aus der 1778 gegründeten “Roßarzneyschule”, lässt sich bis in das Jahr 1834 zurückverfolgen. Ab diesem Zeitpunkt waren, wenn auch nur in bescheidenem Umfang, alle Wirtschaftsgeflügelarten sowie Wild- und Ziervögel Gegenstand klinischer Bemühungen oder pathologisch - anatomischer und aetiologischer Untersuchungen.

Die erste, einer Geflügelkrankheit gewidmete Veröffentlichung war “Beobachtungen über die Vogelpest” von Otto Künnemann (3), erschienen 1902 in der DTW. Das wachsende Interesse am Geflügel, seinen Produkten und Krankheiten belegt eine Vielzahl nachfolgender Publikationen aus verschiedenartigen Fachgebieten stammend. Erster Promovend war 1912 Hellmuth Hempel (1) mit seiner Dissertation “Über eine Colibacillose der Hühner und Untersuchungen normaler Hühnerdärme auf das Vorkommen der Bakterien aus der Coli-Typhus-Gruppe”. Die erste Lehrveranstaltung wurde im SS 1930 von Prof. Wilhelm Krüger (2) mit “Anatomie des Geflügels und der Versuchssäugetiere” angeboten.

Für die Entwicklung der Tierärztlichen Hochschule (TiHo) war die Jahrhundertwende bedeutungsvoll. 1887 zu einer wissenschaftlichen Einrichtung erhoben, konnten 1899 neuerbaute Institute und Kliniken am damaligen Ostrand der Stadt Hannover bezogen werden. Die Hochschule erlangte 1910 das Promotionsrecht und 1918 eine Habilitationsordnung. Zwischenzeitlich (1913) war das Direktorat durch eine Rektoratsverfassung abgelöst worden. Seit 2002 wird die TiHo von einem hauptamtlichen Präsidenten geleitet und wurde 2003 in die Trägerschaft einer Stiftung überführt.

Dadurch war und ist die Selbstständigkeit gesichert, die es erlaubt, flexibler und rascher auf neue Herausforderungen zu reagieren, als dies einer Fakultät im universitären Verbund möglich ist. So war die TiHo beispielsweise 1963 Ausrichter des 17. Welttierärztekongresses in Hannover, beherbergt seit 1972 das “WHO Collaborating Centre for Research and Training in Veterinary Public Health” und erfreut sich 24 internationaler Partnerschaften und Kooperationen.

Zukunftsweisend konnte 1953 ein umfangreiches Neubaugelände am Bünteweg in Hannover-Kirchrode (Westfalenhof) erworben werden, auf dem längerfristig alle Einrichtungen ihren Platz finden werden. Derzeit verfügt die TiHo über 6 Kliniken, 20 Institute, 3 Fachgebiete, 2 externe Organisationseinheiten, ein Lehr- und Forschungsgut sowie eine Ausbildungsstätte für Vet.med.- technische Assistent(inn)en. Der Lehrkörper umfasst >200 Personen, die Zahl der Studierenden ca. 2000, wobei der männliche Anteil unter 20 Prozent liegt.

### **2. Institut für Tierhygiene und Geflügelkrankheiten**

Wegbereitend für das Fachgebiet der Geflügelkrankheiten war 1949 der weitreichende Senatsbeschluss, die Kliniken nach Tierarten neu zu ordnen und bestehende Einrichtungen aufzuteilen. U. A. waren Institute für Tierhygiene sowie Geflügelkrankheiten vorgesehen. Nachdem sich die Besetzung des Hygienelehrstuhls zerschlagen hatte, beschloss der Senat 1955 ein Institut für “Tierhygiene und Geflügelkrankheiten” einzurichten. Auf den gleichnamigen Lehrstuhl wurde 1960 Frau Prof. Irmgard Gylstorff berufen. Es war eine Doppelpremiere: Die erste o. Professorin der Veterinärmedizin, betraut mit dem ersten Lehrstuhl für Geflügelkrankheiten im mitteleuropäischen Raum.

Trotz provisorischer räumlicher Enge im Chemischen Institut, anfangs mit bescheidener personeller und finanzieller Ausstattung, entwickelte sich unter ihrer Leitung reges wissenschaftliches Leben. Erschwerend war auch das Fehlen geeigneter Versuchstierställe vor Ort auf dem alten Hochschulgelände am Bischofsholer Damm. Zur Sicherstellung der studentischen Ausbildung wurden eine umfangreiche diagnostische Tätigkeit und die ambulatorische Betreuung von Wirtschaftsgeflügelbeständen aufgenommen sowie ein Behandlungszimmer für Zier- und Wildvögel eingerichtet.

Die Wissensvermittlung musste in Lehrveranstaltungen der Hygiene und Inneren Medizin integriert werden. Frühzeitig wurden auch Fortbildungsveranstaltungen in Zusammenarbeit mit anderen Hochschuleinrichtungen organisiert.

Mit großem Fachwissen und unermüdlicher Tatkraft eroberte Frau Gylstorff in wenigen Jahren den Geflügelkrankheiten einen festen Platz innerhalb und außerhalb der Hochschule. Ihr überaus erfolgreiches Wirken hat nicht zuletzt 1965 zu ihrer Berufung auf den neu errichteten Geflügellehrstuhl an der Vet.Med. Fakultät in München geführt.

### 3. Klinik für Geflügel

In den 60er Jahren befand sich die einheimische Geflügelwirtschaft in einem radikalen Umbruch mit einer Fülle neuer Herausforderungen für die Veterinärmedizin. Dies bewog den Senat, anlässlich der Nachfolgeregelung die Tierhygiene auszugliedern und den Geflügelkrankheiten allein ein Institut zu widmen. Mit der Leitung wurde 1966 Prof. Otfried Siegmann betraut.

Dank Berufungszusagen und begünstigt durch Empfehlungen des Deutschen Wissenschaftsrates entstand schrittweise die jetzige "Klinik für Geflügel". Schon 1968 konnte auf dem Neubaugebiet Westfalenhof ein Isolierhaus in 1. Ausbaustufe, 2 Jahre später in endgültiger Form, zur Durchführung von Tierversuchen und der Haltung von SPF-Tieren in Betrieb genommen werden. Der Umzug vom Bischofsholer Damm in das unmittelbar benachbarte, neu erbaute 1. Dreierinstitut erfolgte 1974. Im dortigen Erd- und 1. Obergeschoss bestehen seitdem sehr gute Arbeitsbedingungen. Bei der Raumplanung konnte als neues Konzept die Gliederung in Arbeitsgruppen realisiert werden. Der gemeinsamen Aufgabe verpflichtet, erlaubt und fördert diese Organisationsform die unumgänglich gewordene, insbesondere methodische Spezialisierung, die Forschung, Lehre und Dienstleistung gleichermaßen dienlich ist (Abb.1).

**Abbildung 1: Arbeitsgruppen im Institut für Geflügelkrankheiten**

<b>Ambulatorische Klinik</b>	<b>Allgemeine Labordiagnostik</b>	<b>Klinik für Zier- und Wildvögel</b>
<b>Bakteriologie</b>	<b>Parasitologie</b>	<b>Virologie</b>

Schweren Herzens war zuvor der Entschluss zustande gekommen, die florierende Poliklinik für Zier- und Wildvögel am alten Standort zu belassen. Sie sollte weiterhin von der Klientel mit öffentlichen Verkehrsmitteln erreichbar bleiben. Durch Umzug in das alte Apothekengebäude und nachfolgend in freigewordene Räume der Pathologie, konnte sich auch diese Arbeitsgruppe wesentlich verbessern und hat sich einen vorzüglichen Ruf erworben. Seit 2009 ist sie in der neuformierten "Klinik für Heimtiere, Reptilien, Zier- und Wildvögel" im neuen Klinikum am Bünteweg beheimatet. Damit wurde leider das Konzept der Tierartenkliniken aufgeweicht.

Auch die Geräteausstattung gelang zufriedenstellend und konnte später von Prof. Ulrich Neumann, der 1992 die Klinikleitung antrat, nachhaltig verbessert und erweitert werden. Erhebliche Investitionen erfolgten, um mit dem zwischenzeitlichen Kenntniszuwachs und methodischen Entwicklungen insgesamt, insbesondere im Bereich der Molekularbiologie und Immunologie, Schritt zu halten.

Ende der 70er Jahre umfasste der Mitarbeiterstab 28 Personen, davon 10 mit akademischer Qualifikation. Daneben bereicherten immer Doktoranden, Stipendiaten und Gastwissenschaftler in wechselnder Zahl unterschiedlichster Nationalitäten das Leben und die wissenschaftliche Arbeit der Klinik. Einzelheiten wer, wann, in welcher Aufgaben- oder Dienststellung tätig war, ist in den Personen- und Vorlesungsverzeichnissen der Hochschule (4) nachlesbar. Leider ist diese umfassende Informationsquelle letztmals zum WS 2008/09 erschienen. Seitdem muss man sich interessierende

Daten im Internet zusammensuchen. Das gilt auch für detaillierte Angaben über das Lehrangebot und dessen Veränderungen im Verlauf der Jahrzehnte. Die Geflügelkrankheiten sind erst 1967 ein obligatorisches Fach der tierärztlichen Ausbildungs- und Prüfungsordnung geworden.

Zur Vertiefung des Studiums, in engem Kontakt mit der Forschung, bietet die TiHo seit 1969 ein 2-jähriges Aufbaustudium an und ab 1998, wiederum als Vorreiter in Deutschland, ein PhD-Studium nach angloamerikanischem Vorbild.

Über die Forschungsaktivitäten der TiHo-Hannover unterrichtet jährlich ein Verzeichnis der wiss. Veröffentlichungen (8). Darin finden sich ab 1960 mehr als 800 Titel und über 150 Dissertationen sowie 6 Habil-Arbeiten, die aus der Klinik für Geflügel hervorgegangen sind oftmals in enger Zusammenarbeit mit anderen Hochschuleinrichtungen und praktizierenden Kolleginnen und Kollegen. Die Thematik spiegelt das Spektrum der Fragestellungen wider, die in den vergangenen Jahrzehnten bearbeitet wurden.

#### **4. Kompendium der Geflügelkrankheiten**

Beim ständigen Wissenszuwachs über Aetiologie, Diagnose, Prophylaxe und Therapie ist eine umfassende Vermittlung in Lehrveranstaltungen nicht möglich. Den Studierenden bleibt auch kaum Zeit, anhand der Spezialliteratur den aktuellen Stand zu verfolgen. Dies veranlasste Siegmann 1971, ein "Kompendium der Geflügelkrankheiten" als Ergänzung zur Vorlesung und Aneignung unumgänglicher Grundkenntnisse herauszugeben, das 2012 die 7. Auflage erlebt hat (7).

Das Kompendium hat durch Beteiligung der langjährig bewährten Mitarbeiter, K.-H. Hinz, E.-F. Kaleta und H. Lüders (3.Aufl.) und nachfolgend von Prof. G. Monreal, Berlin, und Prof. J. Kösters, München, zunehmend Anklang gefunden. Ab der 6. Aufl. ist Prof. U. Neumann Mitherausgeber. Das Autorenkollektiv umfasst seitdem 35 Kolleginnen und Kollegen aus allen deutschsprachigen vet.med. Bildungsstätten, aus Forschungseinrichtungen, Praxis und Verwaltung. Die ursprüngliche Studierhilfe ist im Verlauf der Jahre ein führendes Fachbuch über Geflügelkrankheiten geworden. Dafür sei an dieser Stelle allen Beteiligten für ihre selbstlose, ideelle Mitarbeit herzlicher Dank gesagt.

#### **5. Fachgespräch über Geflügelkrankheiten**

Im Bemühen um einen engen Schulterschluss mit der Praxis lud die Geflügelklinik 1967 einige Kollegen zu einem Gedanken- und Erfahrungsaustausch ein. Angesichts der Fülle offener Fragen kam man überein, sich zukünftig möglichst halbjährig zu einem "Fachgespräch" (FG) zu treffen. Mit dieser Benennung sollten partnerschaftlicher Dialog und Zusammenarbeit postuliert werden. Diese Leitlinie hat bis zum heutigen Tag ihre Gültigkeit behalten.

Anlässlich der 50. Veranstaltung 1996 berichtete Siegmann (6) über Anfänge und Zwischenstationen der FG, und PD H. Salisch (5) legte eine umfassende Bibliographie nebst einem Stichwortverzeichnis vor. Daraus sind die bis dahin 260 abgehandelten Themen sowie die Namen der Referenten ersichtlich. Einen Überblick über die zeitliche Entwicklung von Schwerpunkten gibt Tabelle 1.

Ohne die tätige Mitwirkung der Referenten und die lebhaften Diskussionsbeiträge zahlloser Kolleginnen und Kollegen ist die Erfolgsgeschichte der FG undenkbar. Die Fortführung übernahm 1996 U. Neumann und seit 2011 liegen Vorbereitung und Durchführung der FG in den Händen von Prof. Sylke Rautenschlein, der jetzigen Direktorin der Klinik für Geflügel.

Das 85. Fachgespräch findet im November 2013 statt.

**Tab. 1: Dominante Themen der Fachgespräche**

Thematik	1967-1980	1981-1995
Aetiologie/ Diagnostik	Marek/Leukose IB-Mutanten EDS 76 Mykoplasmen/Coryza - Stichprobenuntersuchungen	Salmonellose Campylobacter Pasteurellosen Paramyxoviren - Elisa/Molekularbiologie
Prophylaxe	Vaccine: - Marek - Gumboro - ILT - EDS 76 Antikozidia	Vaccine: - Inf. Anämie - Mykoplasmosen - Coriza - Salmonellosen - Pasteurellosen
Therapie	Herdenbehandlung - Trinkwasser - Futter	Rückstandsproblematik - Haltungsart - Wartezeiten
Haltung/ Tierschutz	Stallklima Fütterung Schmerzhafte Eingriffe	Käfig/Kleingruppe Boden/Voliere Herdeneuthanasie
Gesetze	Meldepflicht Novellierung - Arzneimittelgesetz AMG - Futtermittelgesetz FMG	Futterzusatzstoffe Tierarzneirecht EU

## Zusammenfassung

Schon Mitte des 19. Jahrhunderts war das Geflügel Gegenstand tierärztlicher Bemühungen an der damaligen „Königlichen Thierarzneyschule zu Hannover“. Erst 1960 wurden das Geflügel und seine Krankheiten zum eigenständigen Fachgebiet an der TiHo-Hannover. Zunächst im Institut für „Tierhygiene und Geflügelkrankheiten“ integriert, entstand die heutige „Klinik für Geflügel“.

Der schrittweise Aufbau in räumlicher und personeller Hinsicht sowie Lehre und wissenschaftliche Aktivitäten werden umrissen. Abschließend wird kurz die Entstehung des Fachbuches „Kompendium der Geflügelkrankheiten“ geschildert und auf die „Fachgespräche über Geflügelkrankheiten“ in Hannover eingegangen.

**References**

- (1) Hempel, H. (1912): Über eine Colibacillose der Hühner und Untersuchungen normaler Hühnerdärme auf das Vorkommen der Bakterien aus der Coli-Typhus-gruppe. Diss. TiHo Hannover.
- (2) Krüger, W. (1933): Anatomie des Geflügels und der Versuchssäugetiere. Vorlesungsverzeichnis TiHo, Jg. 1933.
- (3) Künnemann, O. (1902): Beobachtungen über die Vogelpest. DTW 10 (43), 413-415 und (44), 421-424.
- (4) N.N. Personen- und Vorlesungsverzeichnisse der TiHo, Jg. 1960-2009; ab 2010 <http://www.tiho-hannover.de/studium-lehre/vorlesungsverzeichnis/>
- (5) Salisch, H. (1996): Bibliographie der 50 Fachgespräche über Geflügelkrankheiten in Hannover (1967-1996). Referatsammlung 50. FG, S. 11-35. Verlag DVG Service, Gießen.
- (6) Siegmann, O. (1996): Von den Anfängen bis zum heutigen Fachgespräch. Referatsammlung 50. FG, S.5-10. Verlag DVG Service, Gießen.
- (7) Siegmann, O. und U. Neumann (2012): Kompendium der Geflügelkrankheiten (7. Aufl.). Schlütersche Verlagsgesellschaft, Hannover.
- (8) N.N. Veröffentlichungsverzeichnis der TiHo, Jg. 1960-2010; ab 2011 [http://www.tiho-hannover.de/fileadmin/user\\_upload/tiho\\_hannover/kliniken\\_institute/07\\_bibliothek/Bibliothek\\_pdf/Verzeichnis-2011.pdf](http://www.tiho-hannover.de/fileadmin/user_upload/tiho_hannover/kliniken_institute/07_bibliothek/Bibliothek_pdf/Verzeichnis-2011.pdf) (letzter Zugriff 2012).
- (9) Stiftung Tierärztliche Hochschule Hannover (2012): Telefon- und Personenverzeichnis, Ausgabe 2012.

**Author's Address:**

Prof. em. Dr. Dr. h.c. Otfried Siegmann  
Klinik für Geflügel  
Stiftung Tierärztliche Hochschule Hannover  
Bünteweg 17  
30559 Hannover, Germany  
E-Mail: [otfried.siegmann@tiho-hannover.de](mailto:otfried.siegmann@tiho-hannover.de)

## Selection for improved leg health in purebred broiler lines

Dagmar Kapell, Newbridge, UK

### INTRODUCTION

Leg health has been an important component of broiler welfare and of the economy of broiler production for many decades and includes a wide range of leg disorders leading to locomotion problems (e.g. Thorp, 1994; SCAHAW, 2000; Bradshaw *et al.*, 2002). This article will focus on five leg health traits recorded within the Aviagen Ltd (Newbridge, UK) breeding programme, namely (1) long bones deformities (LD), including valgus/varus and bowed legs, (2) crooked toes (CT), (3) tibial dyschondroplasia (TD), (4) hock burn (HB) and (5) foot pad dermatitis (FPD).

Long bones deformities are among the most common forms of leg weakness; tibial dyschondroplasia was the most frequent lesion in bones of broiler legs (SCAHAW, 2000). FPD and HB are two forms of contact dermatitis, visible as ulcerations of the skin of the foot or hock, with discoloration, inflammation and necrosis (Martland, 1984; Greene *et al.*, 1985; Mayne, 2005). Leg disorders are associated with a range of welfare issues, including pain, reduced activity, and decreased feed intake due to pain (Martland, 1984 and 1985; Julian, 1998; Kestin *et al.*, 1999). In Europe levels of contact dermatitis at post-mortem inspections are used as an indicator of poor welfare conditions (Council of the EU, 2007).

Trial studies and surveys have shown there are substantial differences among broiler strains in the prevalence of leg disorders (e.g. Kestin *et al.*, 1999; Yalçın *et al.*, 2000; Sanotra *et al.*, 2003; DEFRA, 2010). This reflects in part the large differences that exist in management and environment factors – such as litter quality, age at slaughter or stocking density (Ekstrand *et al.*, 1997; Sanotra *et al.*, 2003) - but also the differences in genotypes (Kestin *et al.*, 1999; Sanotra *et al.*, 2003). Mercer and Hill (1984) estimated heritabilities of 0.29 to 0.62 for a range of leg health traits (crooked toes, splay leg, bowed leg) in three purebred commercial broiler lines, with low but unfavourable genetic correlations with body weight (BWT) at 0.00 to 0.27. Le Bihan-Duval *et al.* (1996; 1997) found valgus and varus deformity heritabilities in two commercial broiler strains of 0.15 to 0.39, with genetic correlations with BWT at -0.06 to 0.12. Chen *et al.* (2011) estimated heritabilities of 0.11 and 0.09 for leg angle in a purebred broiler sire line and dam line, respectively. Kjaer *et al.* (2006) were the first to report estimates of heritability for HB (0.08) and FPD (0.31) and their genetic correlation with BWT (0.44 and -0.08, respectively). More recently, Ask (2010) estimated heritabilities for HB and FPD in two purebred commercial broiler male lines at 0.10 (HB, in both lines) and 0.21 and 0.08 (FPD). The genetic correlations of BWT with HB (0.14 and 0.16) and FPD (-0.51 and 0.08) did not differ significantly from those found by Kjaer *et al.* (2006).

While studies found differences in the prevalence and heritabilities for FPD between strains within an environment (Kestin *et al.*, 1999; Kjaer *et al.*, 2006; Ask, 2010), none compared broilers from the same genetic background reared in different environments. Long term selection on production traits in one environment will lead to increased productivity under those circumstances, but in the presence of genotype by environment interaction (GxE) this may cause problems when animals are placed in a different environment (Van der Waaij, 2004). To evaluate of the effect of GxE on FPD, this trait is recorded in two contrasting environments.

In this article we aim to (1) document the changes of leg health in purebred commercial broiler lines (contributing significantly to the Ross 308 and the Ross 708 crossbred) in the Aviagen Ltd breeding programme following 25 years of selection; (2) estimate heritabilities for a range of leg health traits under selection in an optimal environment (LD, CT, TD, HB, and FPD) and a sub-optimal environment (FPD); (3) estimate genetic correlations of these traits with BWT; and (4) investigate the effectiveness of combined selection for FPD and BWT, and the potential to increase the genetic merit for a trait across different environments.



## **MATERIAL AND METHODS**

### **Birds**

The data for this study originate from the ongoing leg health recordings within the Aviagen Ltd breeding programme. Birds were individually weighed and visually assessed for leg health by a trained team at 5 wk of age (6 wk between 1987 and 1998) to maintain commercial relevance. The team of scorers was regularly assessed for consistency using correlations between and within selectors. Scorers were regularly assessed for satisfactory repeatability scores and not allowed to assess selection candidates until they completed a training period of at least two years. One scorer remained in the team from 1965 till 2012. For estimation of genetic parameters, records for 910,737 birds across four lines were used, collected between October 2007 and September 2010, with an additional generation of pedigree.

### **Housing**

The birds were housed in two contrasting environments: (1) a high bio-secure environment where breeding programme selection candidates are recorded and selected (pedigree (P) environment) and (2) a non bio-secure environment where full-sibs and half-sibs of selection candidates are tested under broader commercial conditions (sib-test (S) environment). All birds had ad libitum access to water and a high quality pelleted diet throughout the growing period. In the P environment, the diet consisted of a broiler starter (up to 10 days of age; 220-250g CP/kg; 12.6MJ ME/kg), followed by a grower (up to 25 days of age; 210-230g CP/kg; 13.3MJ ME/kg) and a finisher (25 days onwards; 190-210g CP/kg; 13.5MJ ME/kg). In the S environment, the starter diet (up to 10 days of age; 195g CP/kg; 12.0MJ ME/kg) was followed by a grower (10 days onwards; 170g CP/kg; 12.7MJ ME/kg).

The stocking density was 27 to 33 kg/m<sup>2</sup> (P) and 22 to 27 kg/m<sup>2</sup> (S), in accordance with the maximum stocking density of 33 kg/m<sup>2</sup> as laid down in the EU Council Directive 2007/43/EC (Council of the EU, 2007). Wood shavings were supplied as litter, and topped up as required. From April 2010 onwards, the amount per top up was reduced to allow the further expression of HB and FPD. In the P environment, the litter was replaced completely at the end of each cycle. In the S environment, half of the litter was retained at the end of each cycle, mechanically conditioned and subsequently topped up with fresh wood shavings.

### **Traits**

All traits were assessed at five weeks of age except line D in the P environment at six weeks from October 2008. LD was defined as a bird displaying either a valgus or a varus deformity of the tarsometatarsi and, to a lesser extent, the tibiotarsi, or a bending of the tarsometatarsi, sometimes continued in the middle forward digit. CT was defined as curling of one or more of the toes due to a deviation of the phalanges, giving the foot a crab-like appearance. Both traits were binomially scored as (0) unaffected or (100) affected.

TD was assessed using a low-intensity x-ray imaging scope (lixiscope) and scored on a 3-point scale, depending on the extent to which abnormal cartilage developed in the tibia: no lesions (score 0), moderate lesions or severe lesions. For subsequent analyses, moderate and severe lesions were combined into one category (score 100). From 1990 till 2006 a first generation lixoscope device was used, and a newer and more accurate version since 2007. TD was measured only in males identified as selection candidates, based on a selection step that combined breeding values for performance traits and a thorough physical assessment including no clinical prevalence of LD and CT. As a consequence only subclinical TD was scored. In line A, from 2010 onwards TD was measured on all males. LD, CT and TD, were considered to be major disorders, and any bird showing either one of them was discarded for breeding and culled using a 'zero tolerance' policy.

HB was scored on a four-point scale: 0% - no lesions (score 0); up to 25% of the surface affected - slight lesions; between 25 and 50% - moderate lesions; or more than 50% - severe lesions (score 100). For subsequent analyses, slight and moderate lesions were combined into one category (score 50). FPD was scored and analyzed on a three-point scale: 0% - no lesions (score 0); up to 50% of the surface affected - mild lesions (score 50); or more than 50% - severe lesions (score 100). For all

traits, a stringent approach was used, whereby both legs were evaluated and the higher scoring leg determined the final score.

### Long-term phenotypic trends

Historical data for this study were available from January 1986 onwards for three purebred commercial broiler lines (line A ~1.0 million birds, line B ~1.5 million birds and line C ~2.3 million birds), thus comprising more than 25 years of selection for leg health. The mean prevalence of leg defects per sex per week was available from January 1986 for LD and CT, from December 1990 for TD and from July 1990 for HB. The trends are based on the weekly prevalence, calculated as the average of the sexes and are given as raw phenotypic trends; due to the categorical nature of the traits, no corrections for environmental changes were made. Minor changes occurred in environmental factors such as feed, lighting programme and litter management. All broilers were managed according to the specifications in the contemporary Aviagen Broiler Manual (1982, 1995, 1996, 1999, 2002, 2005 and 2009) and the corresponding nutritional recommendations.

### Statistical Analyses

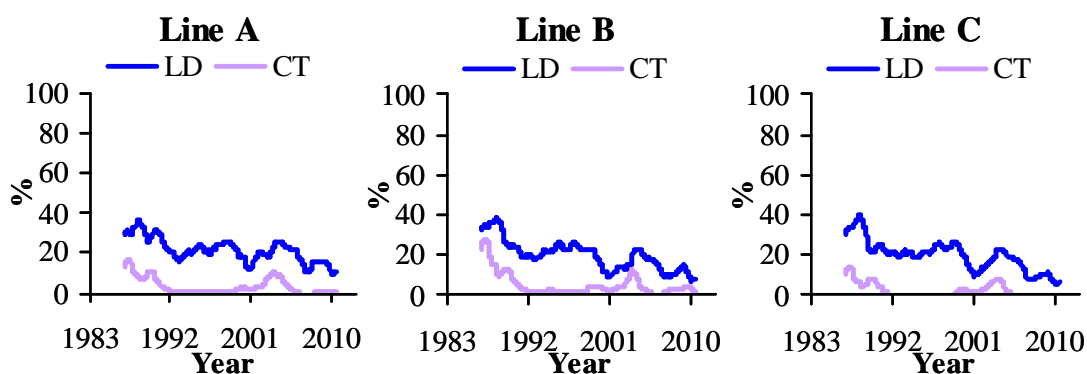
Two multivariate animal models were used to estimate genetic parameters per line. Model (1) included BWT and the four leg health traits LD, CT, TD, and HB (Lines A to C). Model (2) included BWT and FPD as separate traits depending on the environment: BWT-P, BWT-S, FPD-P and FPD-S (Lines A to D). The models included a fixed effect accounting for the interaction between the hatchweek, pen, contributing mating group and sex of the individual, as well as the random effects of the permanent environmental effect of the dam and the additive genetic effect of the animal. All variance component analyses were performed by REML using VCE (Groeneveld et al., 2008). The inclusion of BWT in the multivariate analysis ensured that estimates for leg health traits were not biased due to weight associated effects and selection. The estimates from model (2) were subsequently used to estimate breeding values and predict long-term genetic trends using PEST (Groeneveld, 2006).

## RESULTS AND DISCUSSION

### Long-term phenotypic trend

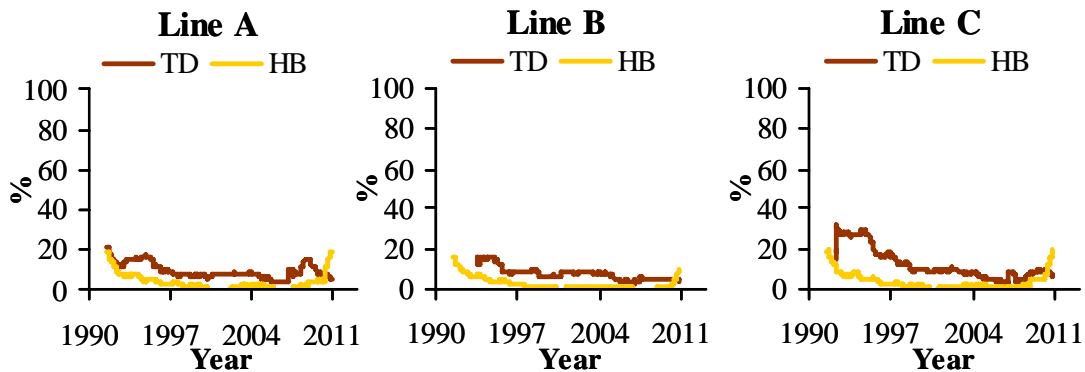
From 1986 till 1996, LD decreased by -1.4 to -1.6%/yr, while CT decreased by -1.2 to -2.3%/yr (Figure 1). CT stabilized at low levels, while LD has continued to decrease (-0.7 to -1.2%/yr). The phenotypic trends for LD and CT show a peak around 2003, coinciding with two changes in management: a reduction in digestible phosphorus levels in the feed and in skeletal defects recording procedure. Subsequently they fell, although recently the prevalence of CT increased slightly until October 2009, especially in line B. This coincides with a change in lighting programme to a 6 hours dark period, meeting forthcoming EC recommendations (Council of the EU, 2007), though the reasons for this effect are unclear.

**Figure 1** Prevalence of long bone deformity (LD) and crooked toes (CT) between October 1985 and September 2010 (1 yr moving average).



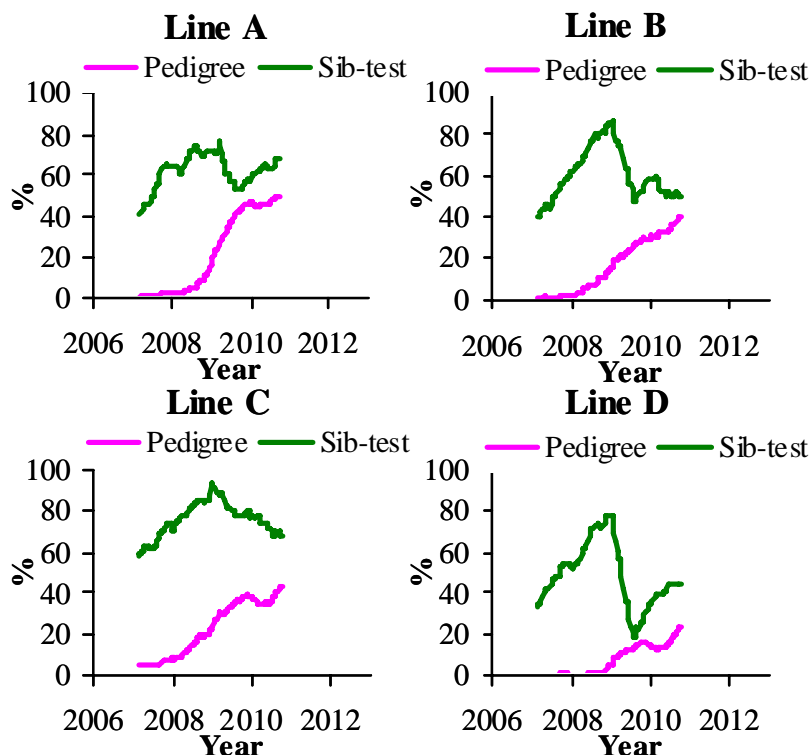
Between 1990 and 2006, TD steadily decreased by -0.6 to -1.8%/yr (Figure 2). Its prevalence increased post 2007 linked with the change to a more accurate device, but declined rapidly from 2008 by -1.0 to -5.2%/yr. HB showed a large decrease (1.3 to 1.5%/yr) in the first 10 years after initiating recording of this trait, after which its prevalence stabilized at very low levels (Figure 2). Reduction of the selection age from 6 to 5 wk in 1998 coincided with a minor decrease of LD prevalence, but did not affect CT, TD and HB, which were already at very low levels.

**Figure 2** Prevalence of tibial dyschondroplasia (TD) between December 1990 and September 2010 (1 yr moving average) and prevalence of hock burn (HB) between July 1990 and September 2010 (1 yr moving average).



Recording of FPD started in 2006 (Figure 3). In the P environment, the prevalence increased between 2006 and 2010 by 9.4 to 17.3%/yr, while no clear phenotypic trend was visible in the S environment. The recent increase in FPD and HB in the P environment coincides with a change in litter management policy from April 2010, whereby litter was topped up with fewer shavings on a routine basis, leading to a reduction in litter quality through an increase in moisture, thereby increasing the prevalence and the variation that can be used in selection.

**Figure 3** Prevalence of foot pad dermatitis in the pedigree and sib-test environment between January 2006 and September 2010 (1 yr moving average).



## Contemporary prevalence of leg disorders

The number of observations, BWT means and leg disorders prevalence in each line from October 2007 to September 2010 are given in Table 1. Consequent on their different origins and emphases given to weight and growth traits, the average BWT ranged from 2.4 kg (line A) to 1.7 kg (line D). The ratio of BWT-S to BWT-P was consistent across lines at on average three quarters, though lines B and C showed a re-ranking with a higher BWT in line C in the S environment.

**Table 1 Mean values for body weight (BWT) and prevalences of long bone deformity (LD), crooked toes (CT), tibial dyschondroplasia (TD), hock burn (HB) and foot pad dermatitis (FPD) in the pedigree (P) and sib-test (S) environment for October 2007 till September 2010.**

Line	P							S		
	n	BWT Mean (SD)	LD P <sub>tot</sub>	CT P <sub>tot</sub>	TD <sup>1</sup> P <sub>tot</sub> (P <sub>sev</sub> )	HB P <sub>tot</sub> (P <sub>sev</sub> )	FPD P <sub>tot</sub> (P <sub>sev</sub> )	n	BWT Mean (SD)	FPD <sup>2</sup> P <sub>tot</sub> (P <sub>sev</sub> )
A	132,813	2,373 (267)	0.129	0.006	0.078 (0.011)	0.098 (0.001)	0.371 (0.092)	15,339	1,804 (369)	0.637 (0.542)
B	217,943	2,040 (234)	0.109	0.026	0.046 (0.008)	0.040 (0.000)	0.261 (0.066)	40,371	1,511 (302)	0.654 (0.569)
C	248,096	1,951 (234)	0.086	0.006	0.080 (0.012)	0.122 (0.004)	0.331 (0.090)	45,942	1,576 (300)	0.792 (0.703)
D <sup>3</sup>	181,783	1,740 (209)	-	-	-	-	0.141 (0.032)	28,450	1,416 (289)	0.453 (0.350)

n = number of records, mean and SD in grams, P<sub>tot</sub> = total prevalence, P<sub>sev</sub> = prevalence of severe lesions for TD, HB and FPD.

1 Only recorded on selected males: 28,566 in line A, 17,999 in line B and 19,361 in line C

2 In the pedigree environment all birds were scored for FPD.

In the sib-test environment the proportion of birds scored for FPD exceeded 98%

3 measurements for BWT in the pedigree environment from October 2008 onwards corrected to 5wk weight

**Table 2 Predicted yearly genetic trend for BWT and FPD in the P and the S environment for August 2006 till September 2010. For key to traits, see Table 1.**

Line	P		S	
	BWT	FPD	BWT	FPD
A	+ 3.2%	- 4.1%	+ 2.6%	- 1.3%
B	+ 2.6%	- 7.5%	+ 3.0%	- 1.6%
C	+ 2.6%	- 3.4%	+ 3.8%	- 0.5%
D	+ 3.2%	- 7.1%	+ 2.9%	- 6.6%

LD showed the highest prevalence of the leg health traits (8.6 to 12.9%). This is lower than that of long bone deformities in other studies e.g. 44 to 73% for valgus and varus (Le Bihan-Duval *et al.*, 1996) and 16 to 19% for unacceptable leg angles (Chen *et al.*, 2011). In contrast to LD, CT showed a much lower prevalence (0.6 to 2.6%), which is lower than in 1984 (3 to 5% - Mercer and Hill, 1984). The TD prevalence ranged from 4.6 to 8.0%, which is lower than reported by Sanotra *et al.* (2003) in a range of commercial crosses and environments (45 to 57%). However, TD was generally only recorded on pre-selected males with no clinical leg defects; the TD prevalence in the un-selected birds is likely to be higher.

The prevalences of HB (4.0 to 12.2%) and FPD (14.1 to 79.2%) are within the wide range found in standard rearing systems in Europe for HB (1 to 89% - Kjaer *et al.*, 2006; Haslam *et al.*, 2007; Ask,

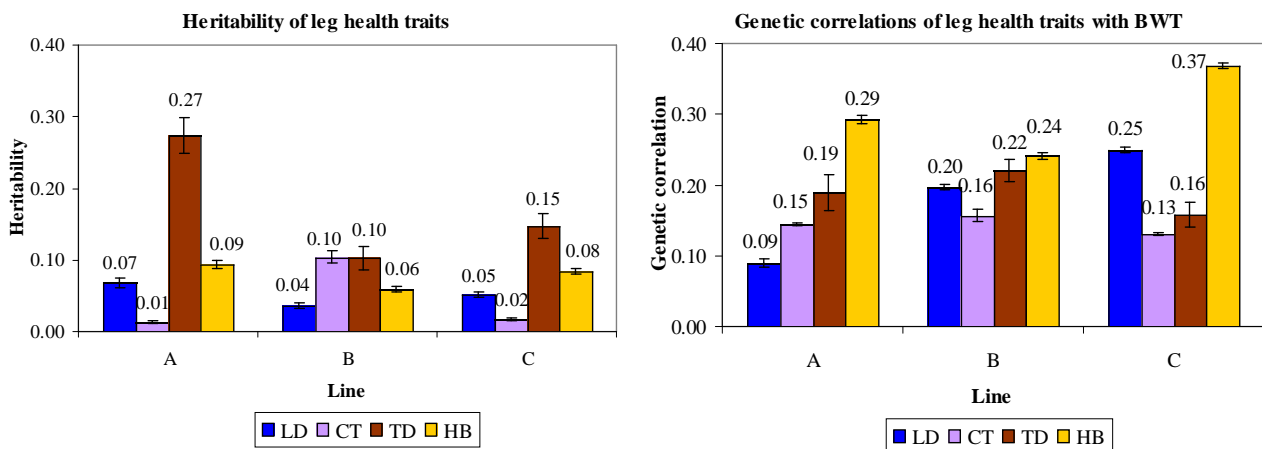
2010) and FPD (11 to 93% - Sanotra *et al.*, 2003; Kjaer *et al.*, 2006; Pagazaurtundua and Warriss, 2006; Haslam *et al.*, 2007; Ask, 2010). The large differences in HB and FPD prevalence between these studies may in part be due to the scoring systems – the present study used a three-point scale, compared to up to nine different categories in other studies (e.g. Kjaer *et al.*, 2006; Pagazaurtundua and Warriss, 2006; Haslam *et al.*, 2007; Ask, 2010). While more categories would allow increased discrimination, those used in this study have the advantage that they are easy to distinguish and score repeatably.

The FPD prevalence differed markedly between the two environments. Dawkins *et al.* (2004) concluded that not only stocking density but also a wide range of housing conditions, including temperature, humidity and litter moisture, play a major role in leg health and overall welfare of broilers. The P and S environment differed substantially in diet, litter management and temperature, which together are likely the main factors that contributed to the differences in prevalence.

### Heritability of leg health

BWT heritability estimates in model (1) were 0.33 in line C, 0.36 in line A and 0.40 in line B. LD (0.04 to 0.07) and HB (0.06 to 0.09) heritability estimates varied little between the lines (Figure 4). The LD estimates are comparable to those of Chen *et al.* (2011), but slightly lower than those of Le Bihan-Duval *et al.* (1996; 1997). On the underlying scale, these estimates (0.10 to 0.17) are lower than those for splay and bow estimated by Mercer and Hill (1984). HB heritability estimates are in line with those found by Kjaer *et al.* (2006) and Ask (2010).

**Figure 4 Comparison of (a) the estimated heritabilities and (b) the genetic correlations with BWT for LD (blue bar), CT (lavender bar), TD (brown bar) and HB (gold bar).**



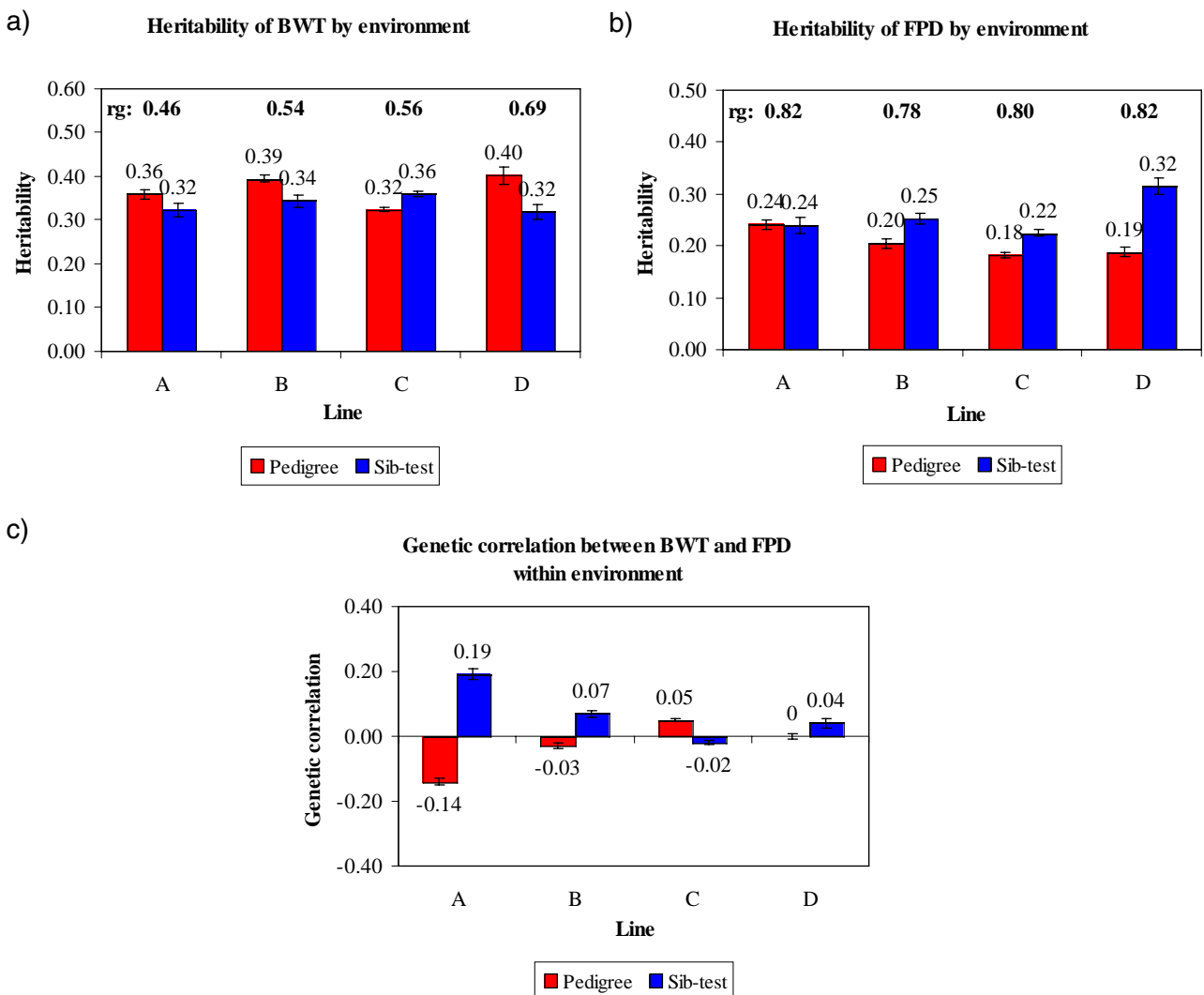
A minor difference between lines was seen for CT, where heritability estimates for lines A (0.01) and C (0.02) were lower than for line B (0.10). On the underlying scale they showed a larger range (0.29 to 0.72) than those estimated by Mercer and Hill (1984). A larger difference between lines was found for TD, with heritability estimates of 0.10 and 0.15 for lines B and C, respectively, and 0.27 for line A.

BWT heritability estimates in model (2) ranged from 0.32 to 0.40 in the P environment and 0.32 to 0.36 in the S environment (Figure 5a). The FPD heritabilities were low to moderate (0.18 to 0.24). No difference in heritability between the two environments was found for line A, but the other lines showed increased heritabilities in the S environment, (0.22 to 0.32) (Figure 5b). These estimates are within the range of the heritabilities found in other studies (Kjaer *et al.*, 2006; Ask, 2010).

Ask (2010) attributed the difference in FPD heritability between lines in part to the prevalence, but we found no clear relation between prevalence and heritability estimate. Heritabilities on the observed scale depend on the choice of categories and their frequencies, and are lower than on a continuous underlying scale (e.g. Dempster and Lerner, 1950; Gianola, 1982). While transformation of the esti-

mated heritabilities to the underlying continuous scale resulted in higher estimates, from a practical point of view, genetic parameters and breeding value estimates on the observed scale are preferred. Overall, despite minor differences the heritabilities for all traits showed a remarkable concordance across the lines.

**Figure 5 Comparison of the estimated heritabilities for (a) BWT and (b) FPD and the genetic correlations between BWT and FPD within environment (c) in the pedigree (red bar) or the sib-test (blue bar) environment.**



### Genetic correlations between BWT and leg health

The genetic correlations between the leg health traits and BWT in model (1) were all unfavourable but generally low to moderate (Fig. 4b), in line with estimates of Mercer and Hill (1984). All lines showed similar genetic correlations between CT and BWT (0.14 to 0.16) and TD and BWT (0.16 to 0.22). Line A showed a much lower genetic correlation (0.09) between LD and BWT than lines B (0.20) and C (0.25). Low estimates between BWT and valgus or varus deformities were also obtained by Le Bihan-Duval *et al.* (1997), but these increased slightly when the weights of severely affected and probably thereby lighter birds were excluded. A continuous screening approach in our breeding programme ensures that severely affected birds are detected and culled for welfare reasons well before their weight reduces drastically, but leg health may have influenced the weight of the moderately affected birds. Mercer and Hill observed higher genetic than phenotypic correlations between BWT and skeletal health traits, likely in part due to a negative environmental correlation between the traits, with affected birds being less vigorous (Mercer and Hill, 1984). A similar contrast between the genetic and

phenotypic correlations was found in the present study, with negative estimates for the correlations between the dam permanent environmental effects and the residual effects of BWT with LD, CT or TD.

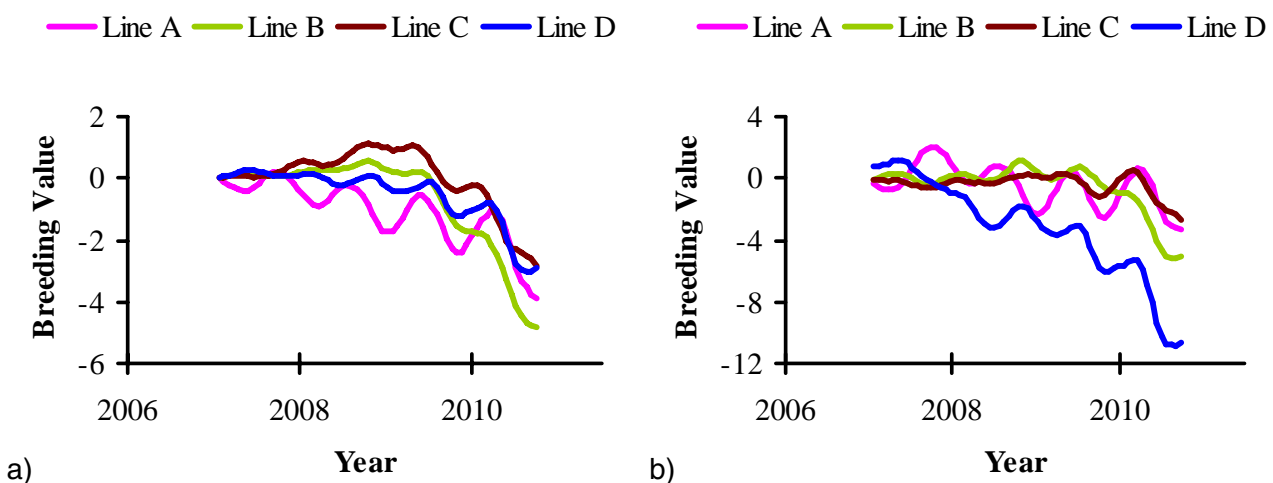
Previous estimates of the genetic and phenotypic correlations between BWT and HB were unfavourable, though few differed significantly from zero (Sørensen *et al.*, 2000; Kjaer *et al.*, 2006; Ask, 2010). The present study confirms this, with moderately positive genetic correlations between BWT and HB. Kjaer *et al.* (2006) hypothesized that a positive correlation between these two traits may be due to a tendency for heavier birds to sit more on their hocks, whereas lighter birds stand more. Genetic correlations between BWT and FPD (Fig. 5c) were either favourable or, if unfavourable, small, as was found by Ask (2010) and Kjaer *et al.* (2006).

Mercer and Hill (1984) predicted that selection programmes for BWT would at best maintain the current levels of prevalence. Nevertheless, despite relatively low heritabilities for leg health traits and unfavourable correlations with BWT, a balanced approach has led to a significant improvement in both BWT (34 to 39 g/yr between 1985 and 2010) and leg health in these lines. The low to moderate genetic correlations of BWT with leg health traits indicate that, from a genetic stand point, there is no evidence that selection for BWT has led and would lead to appreciable decreases in leg health. Moreover, balanced selection including all traits in a selection index is an effective way of achieving continuous improvement in all traits and our results show that the suggestion by Dawkins and Layton (2012), regarding the potential for selecting for welfare and production traits simultaneously despite antagonistic correlations, is already routine practice in a commercial breeding programme.

### Effectiveness of selection for FPD across environments

Following the start of recording of FPD in 2006, active selection against this trait commenced in 2008; figure 6 shows the predicted genetic trend. It should be noted that BWT and FPD, the only traits used in this prediction, are part of a much larger selection index in the Aviagen Ltd breeding programme, which includes for example growth, lifetime performance, reproduction, liveability and health. There is substantial GxE for BWT, as the genetic correlation between BWT-P and BWT-S is much less than 1 (Figure 5a). In contrast to BWT, the high genetic correlations between FPD-P and FPD-S (Figure 5b) indicate that the effects of a GxE interaction are less pronounced for FPD. The genetic trend predicted that genetic selection for FPD improved the average FPD score steadily at 3.4 to -7.5%/yr (P) and -0.5 to 6.6%/yr (S), while at the same time maintaining progress in BWT. The genetic progress in BWT at 2.6 to 3.8%/yr is in line with the progress in meat production that has been reported in earlier publications, e.g. 2.4 % for BWT (McKay *et al.*, 2000; Hill, 2010) and 2 to 3% for the overall efficiency of meat production (McKay, 2009).

**Figure 6 Genetic predictions for FPD in (a) the pedigree and (b) the sib-test environment. The data are presented as the six months moving average. Note the difference in scale of the y axis between the two traits. Breeding values for FPD were predicted on a scale of 0 to 100.**



Historically, the FPD prevalence in the pedigree lines has been very low, but for effective selection at the breeding programme level it needs to be expressed sufficiently in selection candidates through a higher prevalence and variation. For this reason, both environments have been adjusted to achieve a higher level of FPD expression, resulting in an obvious contrast between the genetic prediction and the actual phenotypic trend.

It is not logistically feasible to record relatives of selection candidates directly in commercial conditions, but the use of farms replicating a range of commercial like-conditions to rear full- and half sibs of selection candidates is an appealing strategy to address the effects of GxE interactions. For FPD, a reduction of the disposition to develop FPD under commercial conditions can be achieved through direct selection in the P environment and through a correlated response from recording in the S environment. The predicted genetic trend for FPD, a result of continuous selection of candidates with an average prevalence below the average population prevalence, shows that selection against FPD can be expected to be successful, while the phenotypic trend has remained stable or increased. The achievement of a trend that reduces the genetic propensity of commercial broilers in developing FPD in a wide range of environments is what will ultimately benefit the industry and the welfare of the animals as a whole.

## **CONCLUSION**

We have shown that both broiler leg health and weight have been improved in a selection programme. Considerable decreases in the prevalence of leg disorders have been achieved by a strong focus on accurately scoring selection candidates and a stringent culling policy of discarding any selection candidate with clinical leg defects. In addition, predicted breeding values for candidates with non-clinical leg defects allowed the identification of families that were prone to develop leg issues. Although the heritabilities of leg health traits were low to moderate and their genetic correlations with BWT often somewhat unfavourable, breeding strategies for simultaneous selection for live performance and leg health have been, and continue to be, effective. A comparison of FPD in two contrasting environments shows how selection in a highly bio-secure environment can lead to improvement of the genetic merit under commercial conditions. Broad breeding goals including traits related to production, welfare, adaptability, liveability and reproductive fitness are essential to achieve a balanced progress in pedigree broiler lines. This approach has had and will continue to have benefits to the broiler industry globally.

## **SUMMARY**

Phenotypic data from 25 years of selection for leg health showed that considerable improvements have been achieved for in three purebred commercial broiler lines through accurate scoring, a stringent culling policy and identification of families with superior leg health. Heritabilities for leg health traits in four contemporary purebred broiler populations were low to moderate and their genetic correlations with bodyweight generally somewhat unfavourable, but balanced selection, including, amongst others, production and welfare traits in a selection index, allowed continuous improvement of all traits. A comparison of foot pad dermatitis in two different environments showed that selection in a highly bio-secure environment can improve genetic merit under commercial conditions. Using broad breeding goals and contrasting environments has had and will continue to have benefits to the broiler industry globally.



## Zusammenfassung

### Zuchtfortschritte in der Beinqualität von Broilern durch Selektion in den Reinzuchtlinien

Mit der Beinqualität von Broilern haben sich Genetiker seit vielen Jahren beschäftigt. Eine Auswertung phänotypischer Daten über einen Zeitraum von 25 Jahren dokumentiert deutliche Fortschritte in drei Reinzuchtlinien, die durch eine Kombination genauer Bewertung, konsequentem Ausschluss von Kandidaten mit Beinproblemen von der Vermehrung und Selektion von Familien mit überdurchschnittlicher Beinqualität erreicht wurden. Obwohl die in vier Reinzuchtlinien zeitnah geschätzten Heritabilitäten der Beinqualität niedrig bis mäßig hoch und die genetischen Korrelationen zum Lebendgewicht minimal sind, konnten durch ausgewogene Berücksichtigung von Produktions- und Tierwohlmerkmalen im Selektionsindex in allen Merkmalen kontinuierliche Fortschritte erreicht werden. Vergleiche von Fußballenbefunden (FPD) in zwei unterschiedlichen Umwelten zeigte, dass die Selektion unter den Bedingungen des Zuchtbetriebes mit einem Höchstmaß an Biosicherheit auch zu Verbesserungen im kommerziellen Broilermastbetrieb führt. Zuchtplanung mit einer breiten Palette von Zuchtzielen für unterschiedliche Haltungsbedingungen hat in der Vergangenheit Vorteile für die Broilermäster gebracht und wird dies auch in Zukunft für die globale Broilerindustrie leisten.

## REFERENCES

This article is a summary of the following original papers recently published in *Poultry Science*:

KAPELL, D. N. R. G., W. G. HILL, A. M. NEETESON, J. MCADAM, A. N. M. KOERHUIS, and S. AVENDAÑO (2012): Genetic parameters of foot-pad dermatitis and body weight in purebred broiler lines in 2 contrasting environments. *Poult. Sci.* 91:565-574.

KAPELL, D. N. R. G., W. G. HILL, A. M. NEETESON, J. MCADAM, A. N. M. KOERHUIS, and S. AVENDAÑO (2012): Twenty-five years of selection for improved leg health in purebred broiler lines and underlying genetic parameters. *Poult. Sci.* 91:3032-3043.

### Further reading:

ASK B. (2010): Genetic variation of contact dermatitis in broilers. *Poultry Science* 89: 866-875.

BRADSHAW R.H., R.D. KIRKDEN and D.M. BROOM (2002): A review of the aetiology and pathology of leg weakness in broilers in relation to welfare. *Avian and Poultry Biology Reviews* 13: 45-103.

CHEN C.Y., I. MISZTAL, I. AGUILAR, S. TSURUTA, T.H.E. MEUWISSEN, S.E. AGGREY, T. WING and W.M. MUIR (2011): Genome-wide marker-assisted selection combining all pedigree phenotypic information with genotypic data in one step: an example using broiler chickens. *Journal of Animal Science* 89: 23-28.

COUNCIL OF THE EU (2007): Council Directive 2007/43/EC of 28 June 2007 laying down minimum rules for the protection of chickens kept for meat production. *Official Journal of the European Union* L182: 19-28.

DAWKINS M.S. and R. LAYTON (2012): Breeding for better welfare: genetic goals for broiler chickens and their parents. *Animal Welfare* 21: 147-155.

DAWKINS M.S., C.A. DONNELLY and T.A. JONES (2004): Chicken welfare is influenced more by housing conditions than by stocking density. *Nature* 427: 342-344.

DEFRA (2010): Foot pad dermatitis & hock burn in broilers: risk factors, aetiology & welfare consequences. In, London.

DEMPSTER E.R. and I.M. LERNER (1950): Heritability of threshold characters. *Genetics* 35: 212-236.

EKSTRAND C., B. ALGERS and J. SVEDBERG (1997): Rearing conditions and foot-pad dermatitis in Swedish broiler chickens. *Preventive Veterinary Medicine* 31: 167-174.

GIANOLA D. (1982): Theory and analysis of threshold characters. *Journal of Animal Science* 54: 1079-1096.

GREENE J.A., R.M. MCCRACKEN and R.T. EVANS (1985): A contact dermatitis of broilers -clinical and pathological findings. *Avian Pathology* 14: 23-23.

GROENEVELD E. (2006): PEST User's Manual. In (Ed. I.o.F.A. Genetics)Inst. Farm Animal Gen., Neustadt, Germany.

GROENEVELD E., M. KOVA? and N. MIELENZ (2008): VCE User's Guide and Reference Manual Version 6.0. In (Ed. I.o.F.A. Genetics)Inst. of Farm Animal Gen., Neustadt, Germany.

HASLAM S.M., T.G. KNOWLES, S.N. BROWN, L.J. WILKINS, S.C. KESTIN, P.D. WARRISS and C.J. NICOL (2007): Factors affecting the prevalence of foot pad dermatitis, hock burn and breast burn in broiler chicken. *British Poultry Science* 48: 264-275.

- HILL W.G. (2010): Understanding and using quantitative genetic variation. *Philosophical Transactions of the Royal Society B-Biological Sciences* 365: 73-85.
- JULIAN R.J. (1998): Rapid growth problems: ascites and skeletal deformities in broilers. *Poultry Science* 77: 1773-1780.
- KESTIN S.C., G. SU and P. SØRENSEN (1999): Different commercial broiler crosses have different susceptibilities to leg weakness. *Poultry Science* 78: 1085-1090.
- KJAER J.B., G. SU, B.L. NIELSEN and P. SØRENSEN (2006): Foot pad dermatitis and hock burn in broiler chickens and degree of inheritance. *Poultry Science* 85: 1342-1348.
- LE BIHAN-DUVAL E., C. BEAUMONT and J.J. COLLEAU (1996): Genetic parameters of the twisted legs syndrome in broiler chickens. *Genetics Selection Evolution* 28: 177-177.
- LE BIHAN-DUVAL E., C. BEAUMONT and J.J. COLLEAU (1997): Estimation of the genetic correlations between twisted legs and growth or conformation traits in broiler chickens. *Journal of animal breeding and genetics* 114: 239-259.
- MARTLAND M.F. (1984): Wet litter as a cause of plantar pododermatitis, leading to foot ulceration and lameness in fattening turkeys. *Avian Pathology* 13: 241-241.
- MARTLAND M.F. (1985): Ulcerative dermatitis in broiler chickens: the effect of wet litter. *Avian Pathology* 14: 353-364.
- MAYNE R.K. (2005): A review of the aetiology and possible causative factors of foot pad dermatitis in growing turkeys and broilers. *World's Poultry Science Journal* 61: 256-267.
- MCKAY J.C. (2009): The genetics of modern commercial poultry. In *Biology of Breeding Poultry* (ed. P. Hocking), pp. 3-9, CAB Int., Wallingford, United Kingdom.
- MCKAY J.C., N.F. BARTON, A.N.M. KOERHUIS and J. MCADAM (2000): The challenge of genetic change in the broiler chicken. In *The Challenge of Genetic Change in Animal Production* (eds. W.G. Hill, S.C. Bishop, B.J. McGuirk, J.C. McKay, G. Simm and A.J. Webb), pp. 1-7, Edinburgh, United Kingdom.
- MERCER J.T. and W.G. HILL (1984): Estimation of genetic parameters for skeletal defects in broiler chickens. *Heredity* 53: 193-203.
- PAGAZAURTUNDUA A. and P.D. WARRISS (2006): Levels of foot pad dermatitis in broiler chickens reared in 5 different systems. *British Poultry Science* 47: 529-532.
- SANOTRA G.S., C. BERG and J.D. LUND (2003): A comparison between leg problems in Danish and Swedish broiler production. *Animal Welfare* 12: 677-683.
- SCAHAW (2000): The welfare of chickens kept for meat production (broilers). In, Brussels: European Commission.
- SØRENSEN P., G. SU and S.C. KESTIN (2000): Effects of age and stocking density on leg weakness in broiler chickens. *Poultry Science* 79: 864-870.
- THORP B.H. (1994): Skeletal disorders in the fowl: a review. *Avian Pathology* 23: 203-236.
- VAN DER WAAIJ E.H. (2004): A resource allocation model describing consequences of artificial selection under metabolic stress. *Journal of Animal Science* 82: 973-981.
- YALÇIN S., X. ZHANG, L.M. CHRISTA, G.R. MCDANIEL and D.L. KUHLERS (2000): Effects of divergent selection for incidence of tibial dyschondroplasia (TD) on purebred and crossbred performance. 1. TD incidence and calcium and phosphorus plasma concentrations. *British Poultry Science* 41: 562-565.

**Author's Address:**

Dr. Dagmar Kapell  
Aviagen Ltd.  
Newbridge, Midlothian EH285Z  
United Kingdom

E-Mail: [dkapell@aviagen.com](mailto:dkapell@aviagen.com)