



5 Features to expect from your ration calculation tool

As the market changes and technology evolves, feed companies are constantly trying to keep up with the quickly changing demands of the industry.

Giving expert ration advice has a major impact on the day-to-day activities of feed organizations and provides a competitive advantage. Solid advice and reliable tools

determine your sales results and shape your organisation's image.

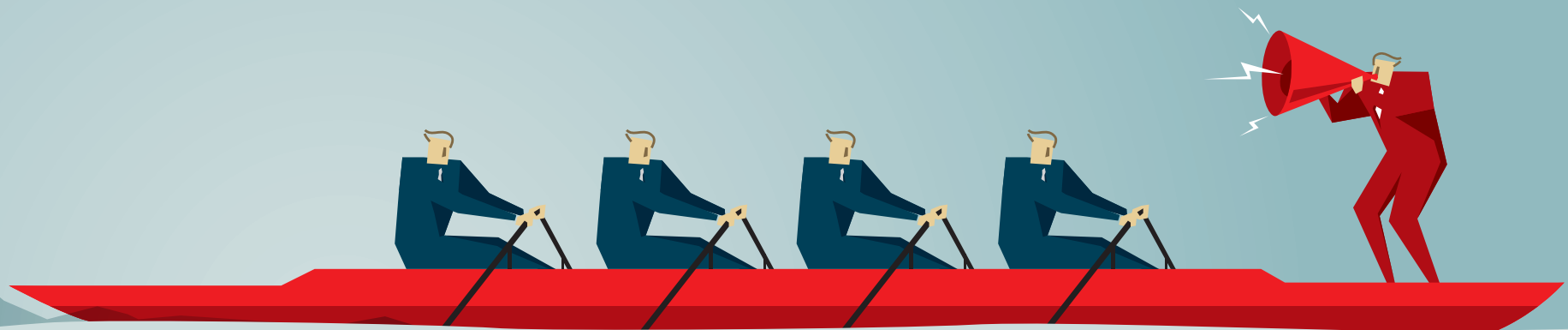
To stay ahead of the competition you need the right tool for the job. This way you can confidently face current and future challenges.

In this guide we will go through the 5 features you should be expecting from your ration calculation tool.

Content

1	Multiple ration models	5
2	Large variety of species	7
3	Centralized tool in the cloud	9
4	Seamless integration	11
5	Focus on innovation	13

“ Drive your business forward by using a large variety of standard and in-house developed models. ”



1 Multiple ration models

In a globalizing market, a single model approach just isn't enough anymore.

Feed companies and farmers are experimenting with multiple models (CNCPS, NRC, Feed into Milk, etc.) to get optimal performance from their animals.

Many larger feed companies have even developed their own models to be able to offer a competitive advantage to their customers.

In the past, most ration calculation software had a single standard model installed locally, on laptops and desktops, as the basis of its solution.

However, to keep up with new developments, it is vital to have a flexible solution that supports multiple models. One centralized flexible solution prevents you from having to maintain multiple ration calculation tools, just to keep up with the market.

A solution that supports multiple standard models and offers users the flexibility to create their own models or implement new standards provides a competitive advantage for your business.

The flexibility to support customers with the model they desire for each project is considered as a major breakthrough in ration calculation software.

“ Don't let your ration calculation software limit your business. ”



2 Large variety of species

As trade restrictions decrease and pursuing new markets has become easier, you should invest in ration software that can support future business endeavors. A reliable tool supports your business as it grows.

In the past many ration calculation tools focused on just one single species. Moving to a global marketplace, there is a growing trend for feed companies to provide rations for a growing number of animal species. Modern solutions therefore support rations for multiple species through their various lifecycles in one single tool. This means you can handle any request from existing customers quickly and efficiently.

Ration software that contains information on a variety of species also gives you the peace of mind to pursue new business. Knowing that your organization is able to handle the specific requirements of any animal type with ease, makes you a reliable long-term partner for customers.

Extending your service level with a flexible and comprehensive ration calculation tool allows your organization to grow and stay ahead of the competition.

“ Every user has easy access to up-to-date information, whenever and wherever they need it. ”



3 Centralized tool in the cloud

The days of external consultants and sales people using outdated data are over. Look for a solution that runs in the cloud. Running a cloud-based ration calculation offers numerous advantages.

- The software is easy to set up and use. There are no worries for the customer as there is no need for setting up and maintaining dedicated laptops for account managers and consultants. Giving your employees the best tools to do their job makes for a motivated team and saves time and costs.
- All data is automatically encrypted and updated in a single database in “the cloud”. This way you can always keep track of company critical data and you don’t have to maintain numerous laptops containing your organizations’ intellectual property.
- A single application, running from a central location and database, gives you the opportunity to set up and manage different types of users that have access to up to date information without compromising the core data. This means you can set up profiles for sales representatives, customers, farmers, consultants, etc. All of them get access to relevant information, optimized for their specific needs and requirements.

“ The integration with our feed formulation software ensures we get the best out of our ration solution. ”



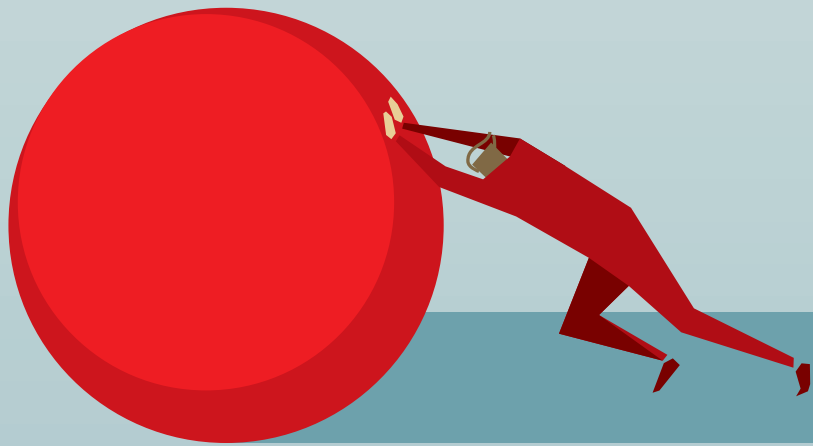
4 Seamless integration

No matter how good your ration tool is, if it can't communicate with your feed formulation software, it's useless.

Reliable software should have extensive import and export functionality to a large variety of file types to ensure information between your feed formulation and ration calculation can be transferred quickly and easily. Most modern solutions offer great MS Excel export functionality so you can easily modify and import the data in the tool of your choosing.

However, to avoid integration difficulties, it's better to look for a software partner that also offers feed formulation software or a completely integrated ration/formulation solution. This gives the obvious advantages of a quicker and more reliable data transfer between the applications.

A fully integrated solution also provides extra functionality that allows better insights and gives you the opportunity to optimize your business.



“ Innovate: Prevent your software solutions from being a bottleneck in your technical developments. ”

5 Focus on innovation

As a business professional you know that when you're standing still you're actually going backwards. The same holds for your nutrition software. In order to ensure continuity, it's always good to make sure your software provider is investing in its own solution. A reliable partner will provide updates and new features at regular times.

This way they can help you keep up with ever-changing requirements in the different nutrition sectors and be agile enough to support future business endeavors.

A software company that provides new developments at regular times, is a good indicator of a solid in-house development team, composed of dedicated people that understand their product and your business. Companies with their own dedicated development team are quicker to pick up on future trends and adapt to new technologies (like cloud solutions, etc.)

An innovative software developer will get the most out of new technologies, allowing you to stay on top of your game.

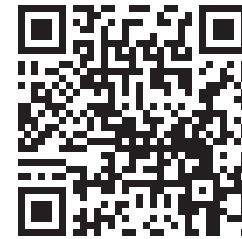
About Adifo

World market leader Adifo develops and services a unique range of feed industry-specific software tools for least-cost feed formulation, quality data management, ration calculation (MultiModel and MultiSpecies), cloud services and ERP. 600 customers in over 60 countries apply Adifo's software to optimize their resources, to achieve optimal animal performance, to service their clients, to be more efficient and to be more profitable. Continuous input from users, more than 40 years of experience and state-of-the-art technology guarantee innovative products that make a difference. Adifo is a gold certified Microsoft partner.

References

Learn what international feed industry experts have to say on Adifo software in this 1 minute video.

<https://www.youtube.com/watch?v=ecgU6nLk2cA>



Awards

VICTAM International 2015
Adifo won the **best innovation** award with its MultiModel, MultiSpecies ration calculation tool.

adifo software

Adding value to nutrition industries



Adifo Representative

Minneapolis,
Minnesota
USA

Tel.: +1 612 280 4798

Adifo HQ

Industrielaan 11b
9990 Maldegem
Belgium

Tel.: +32 50 303 211

Adifo China

Room 2102B, Tower B,
3rd Estate Mansion,
No.1, Shuguang Xi Li,
Chaoyang District, Beijing 100028

Tel.: +86 13811788959

www.adifo.com
